



ANNUAL  
REPORT  
2014-2015

*Thank you for  
supporting  
YOUR Hospital*

## OUR MISSION

“TO WORK WITH THE COMMUNITY TO RAISE AND MANAGE FUNDS TO ENHANCE PATIENT CARE AND FURTHER EDUCATION AT THE QE II REGIONAL HOSPITAL AND THE NEW GRANDE PRAIRIE REGIONAL HOSPITAL.”



## TABLE OF CONTENTS

2	Message from the Chair and Executive Director
3	Message from the QE II Hospital Senior Operating Officer
4	Board of Trustees
5	QE II Hospital Foundation Staff
6	The New Grande Prairie Regional Hospital
7	Seven Generations Energy 2nd Annual Golf Tournament
7	2nd Annual Walk to Remember
8	Donations
9	Donations
10	Now What, Butterfly?
11	The Art of Healing
12	2014 Glow Run/Walk
12	2014 Hospital Bed Races
13	Key Equipment Purchases
14	26th Annual Festival of Trees
15	26th Annual Festival of Trees
16	2015 Bursary Awards
17	Donor List 2014-2015
18	Donor List 2014-2015
19	Donor List 2014-2015
20	Donor List 2014-2015
21	Financials
22	Financials
23	Financials
24	Financials
25	Financials

## MESSAGE FROM THE CHAIR AND EXECUTIVE DIRECTOR



On behalf of the Board of Trustees and the staff of the QE II Hospital Foundation, we would like to thank you for your continued support for OUR HOSPITAL. The difference you make truly does make an impact on patients and their families who live and work in this region.

It is our pleasure to share with you some exciting highlights of the past year. Our physicians and staff at the QE II Hospital are very excited to have the new equipment you helped us purchase which has made it possible to offer treatments here, in Grande Prairie, that patients previously had to travel to Edmonton to receive. Your dedication has also enabled us to continue offering valuable programs like our Therapeutic Clown Program; your commitment ensures children in the hospital will gleam with happiness every time they see Butterfly the Therapeutic Clown.

With the new Grande Prairie Regional Hospital construction well underway, we will be seeing a future in health care like never before. We are carefully and strategically building a fund raising plan that engages the wishes of patients, the needs of health care professionals and the future needs of this growing community.

Our Foundation is successful because of your involvement and we are very proud of all that has been accomplished. We are here to serve this community and look forward to an exciting future.

**Mark Michalyshen**  
Chair  
QE II Hospital Foundation



**Cindy Park**  
Executive Director  
QE II Hospital Foundation

## MESSAGE FROM THE QE II HOSPITAL SENIOR OPERATING OFFICER



Our Queen Elizabeth II Regional Hospital is open 24/7 to provide safe, quality care to you and your loved ones when you need it. We are very proud of our staff, physicians and volunteers; your health care workers who ensure you receive the care you require. Our abilities to provide exceptional care are enriched by the donations we continue to receive through our QE II Hospital Foundation. Receiving enhanced medical equipment allows our health care professionals to offer care right here at our Regional Hospital. The support we receive through the QE II Hospital Foundation for educational opportunities allows our staff and physicians to attend conferences and courses that keep them current and advanced in health care techniques and skills. Because of the QE II Hospital Foundation Bursary Program, students enrolled in health care professions receive financial support to complete their programs. We, in turn benefit with the hiring of these new staff.

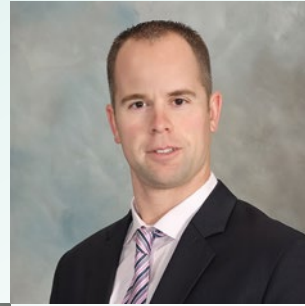
We are very grateful for our QE II Hospital Foundation, our communities, and generous donors who continue to make the differences in the lives of us all. We look forward to continue working with our Hospital Foundation as we build our future and the opening of our new Grande Prairie Regional Hospital.

**Joan Libsekal**  
RN, PhD  
Senior Operating Officer,  
QEIRH, Grande Prairie

# BOARD OF TRUSTEES



**Mark Michalyshe**  
Chair



**Serge Martin**  
Vice Chair



**Kim Drever**



**Scott Lissoway**  
Past Chair



**Dr. Richard Beekman**



**Cecile Neil**



**Dr. Alika Lafontaine**



**Dr. Joan Libsekal**



**Sean Sargent**



**Todd Strang**



**Derek Hall**



**Dr. Len Brezac**

# QE II HOSPITAL FOUNDATION STAFF



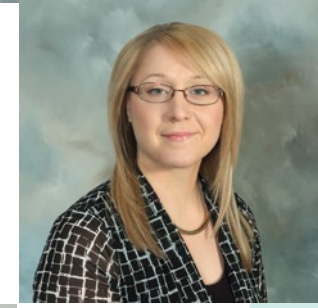
**Cindy Park**



**Nicole Rasmussen**



**Butterfly**



**Jessica Bouchard**



**Dawn Miller**



**Fiona Munroe**

Thank you to the staff who are no longer with the QE II Hospital Foundation:

**Laura LaValley**  
**Michelle Lukwinski**  
**Sally Perkins**

The Queen Elizabeth II Hospital Foundation is led by a 12 member volunteer Board of Trustees of community leaders that lend governance and direction for the Foundation.

Our trustees have a diversity of professional, business and academic backgrounds and bring a wealth of experience, knowledge and skills to the boardroom table. These ambassadors give freely of their time and their expertise to carry forward the work of the Hospital Foundation.



## THE NEW GRANDE PRAIRIE REGIONAL HOSPITAL

Construction at the new hospital is underway with its planned 200 single inpatient rooms. Surgical and rehabilitation plans continue to be refined, as are plans for emergency services, intensive care, cardiac care, obstetrics, neonatal intensive care, pediatric, and mental health. Advanced cancer radiation treatment will also deliver modern cancer therapy services.

The project began several years ago; a massive undertaking involving the collaboration of healthcare advocates, community representatives and provincial bodies to respond to the health care needs of our region.

Since the announcement of the project in 2012, GPRC partnered with Alberta Infrastructure by offering 30 acres of land previously donated to the college, the idea being that post-secondary education would be integrated with the healthcare industry.

In order to promote wellness, a model of care that engages family involvement will be adopted. With this patient-family centered philosophy, the design is moving forward so that a family member can 'room' with the patient overnight. Each in-patient room will be considered private-stay, complete with private washroom facilities. Planning includes a variety of design initiatives, including windows in each room to capture natural sunlight.

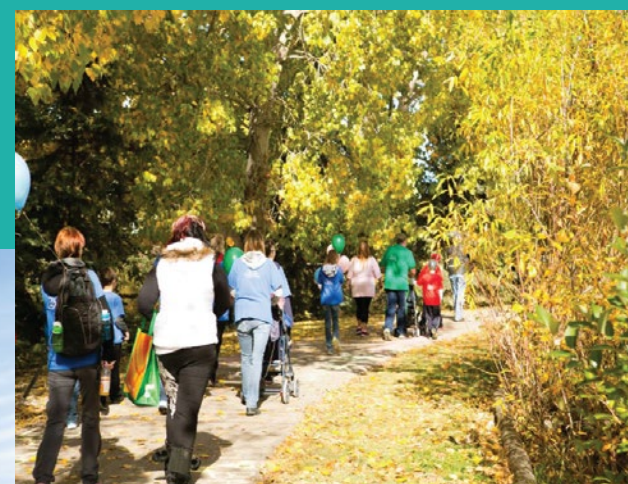
The new hospital will exemplify excellence, and represent the best healthcare facilities of any rural region in Alberta. Its state-of-the-art equipment and wellness programs, with the strong component of on-site education, will service the health care needs of Grande Prairie and regions of northwestern Alberta and northeast British Columbia.



## SEVEN GENERATIONS ENERGY 2ND ANNUAL GOLF TOURNAMENT



Seven Generations raised an astonishing \$300,000 this summer at their 2nd Annual Golf Tournament to help raise funds for the new hospital! This is an amazing jump from their 1st Annual Golf Tournament that raised \$168,000. Thank you to everyone who came out to support this great event. If it wasn't for the support of our community many pieces of much needed equipment would not be available for the patients here in Grande Prairie and the Region.



## 2<sup>nd</sup> ANNUAL WALK TO REMEMBER

Initiated by Tiny Hands of Hope, and first introduced in October 2013, the annual walk is a way to bring together families and friends to honor the little lives that have been lost through miscarriage, still birth, SIDS, neonatal death, and infant death up to the age of two years. The gathering provides a place for families to share stories with others who have experienced similar grief and to honor the loss of their loved ones. This day of remembrance is a heartfelt response to grieving families, letting them know they are not alone during this painful time.

The 2<sup>nd</sup> Annual Peace Country Walk to Remember was held on September 28, 2014. The event raised just over \$4,700 in proceeds for the Parental Bereavement Fund for the QE II Hospital Foundation. During the walk, participants were given bubbles to blow when their child's name was read aloud. Additionally, the children's names were written on the sidewalk—a creative endeavor by organizers so that all would recognize those children who had passed.

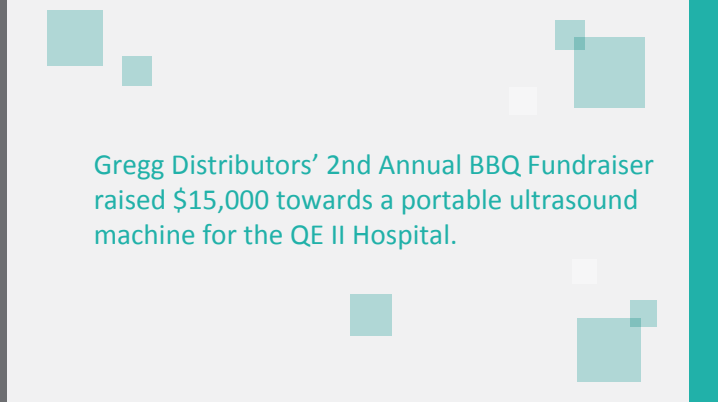




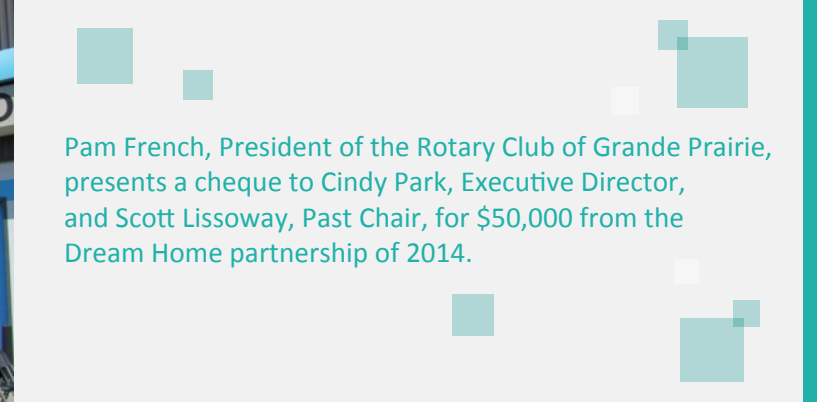
This year KMSC held their 5th Annual Charity Golf Tournament helping to raise money for 18 local non-profit organizations with \$4,506.83 raised for the QE II Hospital Foundation.



The 1st Annual 2Day FM Radiothon raised \$20,000 for a new Incubator for the NICU in the QE II Hospital.



Gregg Distributors' 2nd Annual BBQ Fundraiser raised \$15,000 towards a portable ultrasound machine for the QE II Hospital.



Pam French, President of the Rotary Club of Grande Prairie, presents a cheque to Cindy Park, Executive Director, and Scott Lissoway, Past Chair, for \$50,000 from the Dream Home partnership of 2014.



The Rotary Club of Grande Prairie presents a cheque for \$50,000 to the QE II Hospital Foundation.



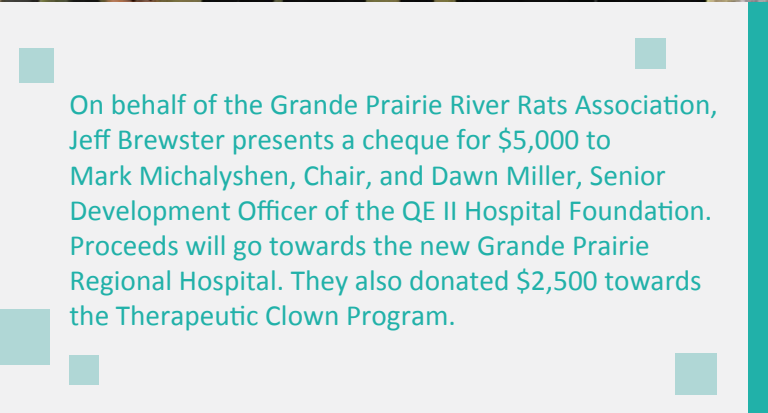
Tervita's 2nd Annual Charity Golf Tournament raised another \$15,000 this summer for the new Grande Prairie Regional Hospital.



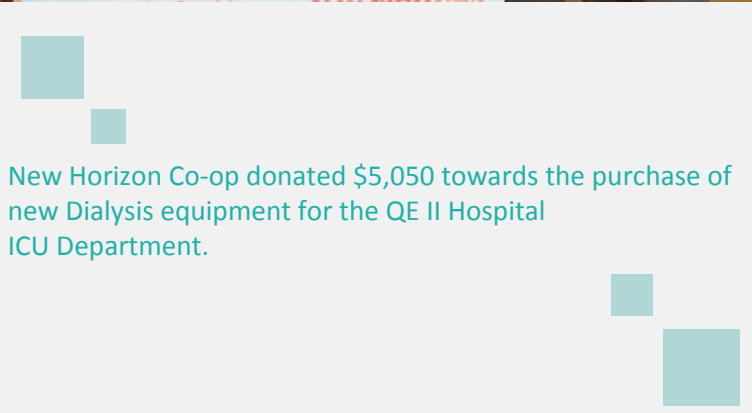
The Shoppers Drug Mart Tree of Life Campaign raised \$14,523 to support women's health in our community. Since the start of the campaign four years ago, they have managed to raise a total of \$50,314.



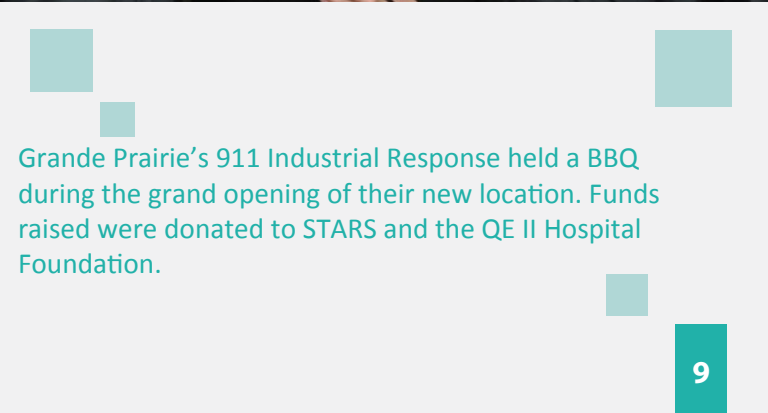
The Tim Hortons Smile Cookie Campaign raised \$26,832 as part of a five year fundraiser where funds collected will be directed to the new Grande Prairie Regional Hospital's Pediatric Department.



On behalf of the Grande Prairie River Rats Association, Jeff Brewster presents a cheque for \$5,000 to Mark Michalyshen, Chair, and Dawn Miller, Senior Development Officer of the QE II Hospital Foundation. Proceeds will go towards the new Grande Prairie Regional Hospital. They also donated \$2,500 towards the Therapeutic Clown Program.



New Horizon Co-op donated \$5,050 towards the purchase of new Dialysis equipment for the QE II Hospital ICU Department.



Grande Prairie's 911 Industrial Response held a BBQ during the grand opening of their new location. Funds raised were donated to STARS and the QE II Hospital Foundation.

## NOW WHAT, BUTTERFLY?



Children hate getting IVs. The little Intravenous line that helps to quickly hydrate and administer medications is feared by many. That itty bitty needle used to insert the IV line is often feared more than surgery itself.

Luckily, distracting children while they're getting their IV has always been fun for me! I tell the kids what's going on and I find that explaining things eases A LOT of their built-up tension. Then, when it's time for the needle, I draw their attention to something more fun. A good slight-of-hand magic trick often gives just enough time for the nurse to insert that needle pretty fast.

But then what? It's stuck in the hand for hours and sometimes days. The IV pole becomes a burden to a child; awakening to nurses doing late night checks, or to the annoying beeping from the machine alerting there is air in the line. A little boy recently asked me, "Now what, Butterfly? I can't do anything because of this!" while holding up his IV hand. "Well," I replied, "we better stick these fish in your fish tank before they dry up." As I grabbed a sheet of fish stickers from my clown cart I turned to him and asked, "Do you like sharks?" "Yes," he replied. "Do you like turtles?" He nodded. "Perfect! We need to stick them in your fish tank. See the IV bag on that pole? That's your fish tank, and we are going to add lots of fish to your IV bag. Did you know that your fish are feeding you? And every time you hear a beep from your IV machine it's like a submarine is passing by. We need to make a sign that says 'Don't feed the fish because the fish are feeding me'".

The joy of seeing an instant smile, the joy of a child being excited about an IV bag attached to him and waiting to hear the machine "beep" is wonderful because imagining a big submarine passing by is so much more fun than what they once feared.

Butterfly

## THE ART OF HEALING

Please allow me to introduce myself, my name is Fiona Munroe. I am now two years into my position as Visual Arts Coordinator at the Queen Elizabeth II Hospital and am so pleased to be involved in this capacity. I have been involved in the arts all my life through many different roles and it has given me so much back that I am beyond thrilled to be able to share this passion with the staff, patients and visitors of the Hospital. I have learned firsthand through personal experience the beneficial effect of the arts in health and healing. Art allows distraction, escape, contemplation, exploration and can bring the participant a sense of calm, of relaxation, of enjoyment, of purpose and ultimately wellness. The psychological wellbeing of the patient is integral to their physical healing and the Arts can bring wellness in many forms and in many ways.

This past year, it was my pleasure to explore and maintain the Arts Collection at the Hospital. I took the opportunity to get a full grasp of the scope of the collection and try to move and reintroduce different pieces in different places within the Hospital. I will continue to do this in order for each piece to reach the widest audience possible and I encourage you to slow down as you walk the halls of our institution and allow something artistic to add to the therapeutic quality of your visit here.

Our rotating Gallery spaces have been a wonderful venue to bring the Art of our very talented Peace Region into the daily life of the Queen Elizabeth II Hospital. The Courtyard Gallery, adjacent to the cafeteria, was fortunate enough to host shows from Donna Kaut, Ed Bader, Helena Mulligan, Vicki Hotte, The Northern Piecemakers Quilt Guild and Dan Arberry. These shows brought the diversity of Art into the setting allowing us to enjoy approaches ranging from realism to the abstract, using a wide range of materials including fabric, wax encaustic, oils, acrylic, watercolours and mixed media and with subjects ranging from Flora to Fauna and much more. Similarly, in our Mackenzie Place display cubes we were able to feature art works from the children of Grande Prairie brought to us by the Centre for the Creative Arts, a beautiful selection of smaller works by well known and appreciated regional artists Euphemia McNaught, Robert Guest and Jim Adrain taken from the Hospital's own collection and some very creative and introspective masks made by patients from Addictions and Mental Health Services. We wrapped up the balance of our year with a selection of beautiful handmade pottery from Cheryl Brown and the incredibly intricate floral designs of Janice Lutsenko. Much of the Art on display in our Gallery spaces is available for sale with a portion of the proceeds going to the Hospital Foundation. I encourage you to stop by often to enjoy the various exhibitions and if you see something you like, consider making a purchase and take it home knowing that you are supporting both local artists and our Foundation.





## 2014 GLOW RUN/WALK



On Friday, July 11th the Grande Prairie Run Walk Club and the QE II Hospital Foundation held its first ever Glow Fun Run/Walk event! The event was a huge success and many people from the Grande Prairie area enjoyed Zumba, free photobooth, free face painting, BBQ and great music. The QE II Hospital Foundation sold different glow items at the event such as head bands, glasses, glow necklaces, bracelets and mouth guards. At 10:30 p.m. all of the participants lined up at the start line for a 3k or a 5k run/walk. There were prizes for best dressed, group best dressed and child best dressed as well.

The QE II Hospital Foundation would like to send out a HUGE thank you to the City of Grande Prairie for being the presenting sponsor of the event and to the Grande Prairie Run/Walk Club for all their hard work in making this event possible. It was a pleasure working with all of you and we look forward to working with you again next year. A big thank you to all our volunteers, as always, this event would not be possible without each and every one of you. This event raised nearly \$10,000 for the new hospital.



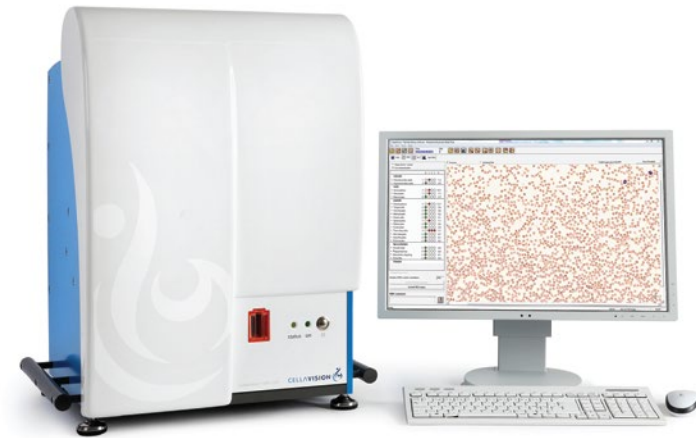
## 2014 HOSPITAL BED RACES

On your marks ... get set... GO!! The QE II Hospital Foundation held their first Hospital Bed Races on July 1st after the Canada Day parade. We would like to extend a HUGE thank you for everyone who participated in our Hospital Bed Races. Everyone had a great time and many laughs were had. It was a hot one and everyone was on fire, pushing those beds trying to get to the finish line. The QE II Hospital Foundation team won the cup and is thrilled to have the cup in the office for one full year. We would like to thank the City of Grande Prairie and the County of Grande Prairie No. 1 for their sponsorship. We look forward to next years' Hospital Bed Races and we hope to see everyone out there again.

Investment in state of the art equipment for our QE II Hospital is paramount for staff efficiency, and ultimately vital to the wellness of the patients we serve.

Two key investments were made this year:

## EQUIPMENT



## CELLAVISION DM 1200 ANALYZER

CellaVision technology allows improvement in quality of cell identification and enhances productivity and therefore turnaround time. The software is faster than the manual work traditionally performed by personnel using microscopes—cells in the blood and body fluids are analyzed automatically—allowing for rapid diagnosis and timely treatment. In addition, coupled with the remote review software, hematology specialists in Edmonton can review, in real time, cases which present challenging images, eliminating the delays associated with previous methods of communication and transport. The software also provides a solution to the shortage of pathologists (a problem for several years), filling that void as well as assuring excellence in service to the City of Grande Prairie and eleven surrounding communities.

This technological advancement speaks to efficiency and diagnosis, and directly affects treatment decisions, delivery procedures, and quality of life for both staff and patient.

## ENDOSCOPIC ULTRASOUND

Endoscopic ultrasound (EUS) has been adopted into various interventional techniques and strategies which then improve diagnosis and management of cancer and other illnesses. Its high resolution image makes it easier to see certain areas than traditional methods allow. In addition, EUS allows localized biopsies with larger tissue volumes translating to a more intelligent determination of treatment options.

EUS allows highly trained specialists the opportunity to evaluate abnormalities, including lumps or lesions, which previously could have only been detected using other methods. The detailed images EUS provides can determine origin of disease, and detect the spread of cancers. As the science develops, other applications of EUS can be evaluated and practiced.

The Alberta Thoracic Oncology Program considers endoscopic ultrasound essential in its standard of care for suspected lung cancer.

Previously, Grande Prairie and area patients required transportation to Edmonton for this service therefore delaying and disrupting the process of diagnosis and treatment. The acquisition of this equipment has directly affected the quality of life of the hospital's patients and has enhanced the staff's ability to accurately diagnose, efficiently deliver results, and ultimately treat disease.





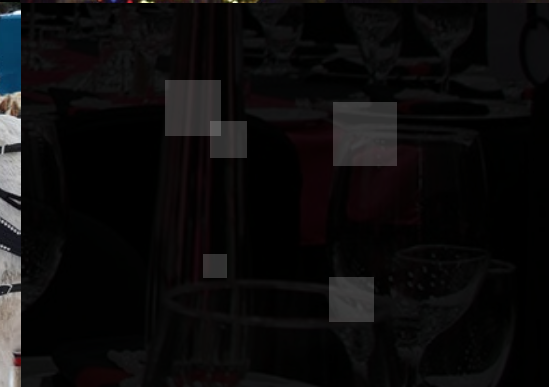
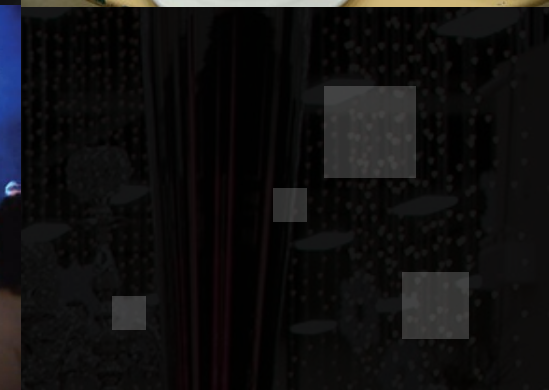


# 26th Annual Festival of Trees

Thousands of visitors eagerly filled the Entrec Centre to marvel at the splendour of this year's 26th Annual Festival of Trees. The scene was filled with captivating lights, elegant decorations, and elaborately decorated trees and creations. Packed full of exciting events and activities, the festival has become a much anticipated holiday tradition for our community and an integral part of raising funds for the QE II Hospital Foundation.

The festivities began on a Saturday evening which hosted another sold out Gala event with over 600 guests in attendance. Attendees took pleasure in a sumptuous 3-course dinner followed by a riveting live auction and sensational live entertainment. The following Friday featured our Senior's Day events along with our enchanting evening event, Mistletoe Magic, where visitors savoured the sights, sounds and tastes of the season. The rest of the fun-filled weekend was abundant in entertainment and activities for all to enjoy, including Sunday's scrumptious Teddy Bear Breakfast!

Celebrating a record year, the Foundation raised nearly \$425,000 for the QE II Hospital; truly a reflection of this year's theme 'You are the key to care, not only for this generation but for future generations'. We would like to thank all of the donors and sponsors along with the tireless efforts of over 500 volunteers who helped bring this signature event to life. Your continued support will help us in our mission to enhance patient care and further education at the QE II Hospital and Grande Prairie Regional Hospital.



SARAH JOAN ALWARD BURSARY

Mark Michalyshen presents \$2,500 to Lisa Lorenz



Cindy Park and Mark Michalyshen present \$1,500 to Mary Melnyk



Cindy Park presents \$1,000 to Natasha Rigler



DR. PHIL & VI SUNOHARA SURGICAL NURSING FUND BURSARY

Cindy Park and Mark Michalyshen present \$932.56 to Rachel Jordan



The Dr. Phillip Sunohara Memorial Surgical Scholarship was awarded to Ruthanna Okorosobo for \$10,000 and the Northern Alberta Rural Physician Scholarship was awarded to Page Brooks for \$10,000 (Not pictured)

2014-2015 DONOR LIST

- 1038453 Alberta LTD
- 1157940 Alberta Ltd.
- 1230237 Alberta Ltd.
- 1289333 Alberta Ltd.
- 1327337 Alberta Ltd.
- 1546675 Alberta Ltd.
- 1671002 Alberta Ltd.
- 212 Degrees Premier Health & Performance Centre
- 2 day FM
- 3 C Information Services
- 471601 Alberta Ltd.
- 505162 Alberta Ltd.
- 859238 Alberta Ltd.
- 908346 Alberta Ltd
- 96.3 Reach FM
- Margaret Abbott-Brown
- ACT Grande Prairie Auxiliary
- ACT Ladies (Grande Prairie) Club
- Sylvia Advent
- Dale Aebly
- Affordable Elegance
- AHS On - Site Office
- Alberta Association of Agricultural Societies
- Alberta Ground Control Inc.
- Alberta Health Services
- Alberta Highway Services
- Alberta Teachers' Association
- Trumpeter Local 26
- Tim Alberts
- Naomi Alexis
- All Peace Petroleum Maintenance Ltd.
- Doug Allan
- David Anderson
- Estate of Harry Anderson
- Jennie Anderson
- Larry Anderson
- Phyllis J. Anderson
- Margo Anderson-Boucher
- Andrea's Pampered Pets
- Anonymous
- Aquatera Utilities
- Alex Arapov
- Arbonne International
- Archer's Welding Ltd.
- Don Armstrong
- Derek Arneson
- Assure Lock Ltd.
- ATB Financial
- ATCO Gas Employees Participating in Communities (EPIC)
- ATCO Gas/ATCO Electric
- Aubourn Investments Inc.
- Aurora Eye Care
- Aurora Spring Water
- Richard Bacon
- Sherree Bacon
- Terry Bacon
- Alistair Bain Frank Baker
- Shannon Baker
- Debbie Balcome
- Bama Furniture
- Barefoot Photography Arts
- Megan Barled
- Lynne Barros
- Kevin Bathgate
- Leslie Bayer
- Bear Creek Animal Clinic
- Rita Beck
- Richard Beekman
- Darrel Bekkerus
- Melita Beltran
- Margo Belzile
- Grant Berg
- Better Than Fred's
- Trudy Beyer
- Bezanson School
- Bob Bickell
- Wes Bidyk
- Big Country 93.1 XXFM
- Raymond Biggs
- Bird Industrial Group Ltd.
- Donnagay Birkbeck
- Bombshell Boutique
- Stewart Bowen Margaret Bowes
- Ronald Boyce Fred Boychuk
- John Bradley
- Harold Branden
- Dianne Brandsater
- Brandt Tractor Ltd.
- Louise Braumberger
- Brent North Real Estate Inc.
- Aubrey Brewster
- Len Brezac
- Vivian M. Brightman
- Lynelle Brochu
- Edward Brown
- Browns Social House - Westgate
- Kailey Bruce
- Amber Bryan
- Barb Buckley
- Bud Country Fever
- Aliver A. Buguis
- Delores Buhler
- Mary Bull
- Justin Burwash
- Robert Byar
- Salvie Cahilig
- D.R. Cameron
- Neil Campbell
- Canadian Natural Resources Limited - Calgary Branch
- Canadian Tire Associate Store #344
- Canadian Western Bank
- CANFOR (Canadian Forest Products Ltd.)
- Nancy B. Carandang
- Matthew Carberry
- Alwyne Carleton
- John Carleton
- Ken Carleton
- Terry Carleton
- Judy Carlson
- Pat Carlson
- Carmen's Images
- Caron Education Foundation
- Caron Measurement & Controls
- Alle Carter
- Darryl Carter
- Cassia Company Inc.
- CDN Controls Ltd.
- Central Peace Ministerial Association
- Tejinder Cheema
- Chic Perspective Photography Inc.
- Chickweed & Clover
- Stephanie Chisholm
- Dale Chornoboy
- Kevin Chrenek
- Chrenek and Dion Investment Advisors
- Christ Lutheran Church
- Alex Christensen
- CIBC Head Office
- City of Grande Prairie
- Clair Inc
- Candace Clark
- Lana Clarke
- Robert Clarke
- Susan Clarke
- Clean Harbors
- Bernice Cleave
- Cledwyn E. Lewis Professional Corporation
- CN
- Co-op Gas Bars
- Karly Cole
- Howard Collins
- Mildred Colter
- Commando Oil Field
- Community Foundation Of Northwest Alberta
- Community Futures Grande Prairie & Region
- ConocoPhillips Canada
- A. S. Coons
- Costco Wholesale Canada Ltd.
- Countryside Motor Sports Inc.
- County Of Grande Prairie Firefighters
- County of Grande Prairie No.1
- Gerd Cramer
- Linda Cramer
- Credit Suisse Securities
- Holly Crichton
- Leslie Crichton
- Crouse's Cleaners
- Elizabeth Crowshaw
- Meaghan Cullingham
- Carol Culp
- Anthony Czaban
- D. D. T. Contracting Ltd.
- Cathy Dahlberg
- Daishowa-Marubeni Intl. Ltd.
- Peace River Pulp Division
- Irene Dalen
- Darryl Carter & Company
- Dash Energy Services LTD
- Davanger Consulting Ltd.
- Cliff Davidson
- Katja Davidson
- Greg Dawe
- James Dawson
- Leo Dawson
- Gail Deagle
- Wendy deBruyn
- Decca Industries Ltd.
- Lori Deering
- Edgar dela Cruz
- Marife dela Cruz
- Dianne C. Delaney
- Delayne Holdings Inc.
- Raubenheimer Denkema
- Monica Der
- Kevin Derksen
- Diane Deslauriers

# 2014-2015 DONOR LIST

Fairview Palliative Care Support Group  
Famoso Neapolitan Pizzeria  
Glenda K. Farnden  
Sylvia Fernandez  
Jennifer Ferris  
Robert Finch  
Finning Canada Ltd.  
Fletcher Mudryk and Co.  
Sylvia Fokkens  
Formula Powell  
Rob Forrester  
Darren Francis  
Paul Fredland  
Ken Fredrickson  
Freson Bros Grande Prairie South  
Freson Bros. Grande Prairie North  
Friesen Bain Chartered Accountants  
Dean Fritsma  
Hideo Fukushima  
Fundamental Technologies Ltd.  
FYI Eye Care Services and Products Inc.  
G-bo Photo Booth  
G-Corporation Investments Inc  
Marcel Gagnon  
Eddie Gairdner  
Janet Gass  
Bryan Gaunt  
J.W. Gentles  
Joanne Gerard  
Ray Gilkyson  
Kelly Gitzel  
Anne Glancey  
Gordon Glenn  
Randy Glenn  
Global Pet Foods  
Cheryl Godfrey  
Chris Goetjen  
Maura Good  
Elizabeth Good-Gerow  
Marilyn Gordey  
Graham Management Services LP  
Allan Granberg  
Anne Granberg  
Grande Prairie Airport Commision  
Grande Prairie and District  
Catholic Schools  
Grande Prairie Auto Group  
Grande Prairie Firefighters Charitable  
Foundation  
Grande Prairie Get Active Network  
Association  
Grande Prairie Lions Club  
Grande Prairie Live Theatre

Grande Prairie Public School District #2357  
Grande Prairie River Rats Association  
Grande Prairie Run/Walk Club  
Grande Prairie Surgeon's Office  
Great-West Life Assurance Company  
Elsie Greber  
Janet Green  
James W. Grove  
Randall Grubb  
Clarence Guydash  
Libby Hackenberg  
Austin Hadland  
Evelyn A. Hadland  
Karen Hagen  
Laurie L. Hale  
Ted Halwa  
Jennifer Hammell  
Valerie Hannak  
Happy Trails RV Inc.  
Frank Harbour  
Marianne Hartman  
Nelius Haugland  
Merle Hawryluk  
Laura Hayes  
HD Energy Rentals Ltd.  
Murray Head  
Percy Head  
Sandra Head  
Health Sciences Association of Alberta  
Heartbeat Productions  
Laverne Hebner  
Ellen Helgason  
Elaine Henderson  
Bridget Hennigar  
Ronald L. Henschel  
Hertz Equipment Rentals  
Terrence Hickey  
Marvin Hickson  
James Hindmarch  
Shauna Hoffos  
Alex Hogg  
Carla Holton  
Home Hardware  
Garnet Hommy  
Horizon North Logistics Inc.  
Horizon North Manufacturing  
House Dressing Inc.  
Anne Housman  
Colin Hrychiw  
Hub International Phoenix  
Insurance Brokers  
William Huber  
Brianna Hudson

Kim Hughes  
Dean Hunt  
Ernie Hunt  
Husky Group of Companies  
Michael Hussey  
Hutchinson  
HWD Construction Ltd.  
Hythe Regional School  
Christine Impey  
Insight Web Studios  
Irons Design  
John Andrew Irwin  
ISL Engineering and Land Services Ltd  
J H Interiors  
J. Nadeau Transport Ltd. A/O Jeff's Water  
Karen Jackson  
Clement Jacobs  
Dean Jacobs  
Jason Jang  
Lydia Javier  
Keith Jefferies  
Jel Futures Inc.  
Linda Johnson  
Normie Johnson  
Murray Johnston  
Kevin Jones  
Lionel Jones  
Mary Jones  
William Jones  
Jugo Juice  
Just Us Club  
Donald Juzwishin  
Ian B. Kay  
Kay McVey Smith & Carlstrom LLP  
Kaymor Machining & Welding Ltd.  
Paula Kellgren  
Ken Sargent GMC Buick Ltd.  
Ken-Co Equipment Ltd  
Tina Kennedy  
Kentucky Fried Chicken  
Pamela Keownglaser  
Kevin Vobeyda Real Estate Ltd.  
Brittany Khan  
Tanya Kinderwater  
Mary T. Kirkham  
Kevin Kirscht  
Kerri Kjemhus  
Mia Klein-Gebbinck  
Carrie Klukas  
Chancie Kluyt  
KMSC Law LLP  
Ian Kreuzinger  
Cheryl Kruger

Irene Kufeld-Freis  
Raymond LaCroix  
Alika Lafontaine  
Mark Langer  
Eileen Langstaff  
Davina Lansing  
Jenette Lappenbush  
Larry Lappenbush  
Kevin Lavalee  
George LeBlanc  
Lee's Sheet Metal (1980) Ltd.  
Maureen Leslie  
Robert Leslie  
Robert Letendre  
Cled Lewis  
Owen Lewis  
Lewis & Chrenek LLP  
Joan Libsekal  
Laura Lindsay  
Christena Livingstone  
Gwen Lizotte  
Holly Ljuden  
Ronald Lloyd  
Anita Lochhead  
Gloria Lock  
Cindy Lockhart  
Lockhart Farms Ltd.  
Violet Lojczyc  
Garry Lokseth  
London Drugs Foundation  
Charles Longmate  
Les (Charles Senior) Longmate  
Dan Longtin  
Loreck Homes  
Kendal Lovrod  
Leif Lovrod  
Lowell Lovrod  
Michelle Lukwinski  
Mirafior Macaraeg  
Crisaline MacDonald  
Earl MacKay  
Catherine MacKenzie  
Brody Macklin  
Madden Properties Inc.  
Maddhatters Liquid Lounge  
& Crazy Cuisine  
Malekoff Consulting Ltd  
Joyce Maple  
Christopher Mapp

Gerry Marcotte  
Rita Marcotte  
Marcy's Flower Boutique  
Dori Mark  
Emily Mark  
Nick J. Markovich  
Marlin Travel  
Margaret Martel  
James Martens  
Brenda Martin  
James Martin  
Kim Martin  
Serge Martin  
Marlene Matlock  
Matrix Solutions  
Janice Matuichuk  
Maxim Storage Inc.  
Roy McAusland  
Denise McCarty  
Angela McCashion  
McGoverns RV & Marine Centre  
Maureen Mcilvrde  
Sharon McKim  
Bill McLandress  
Lorne McLeod  
Shirley McLeod  
Louise McNeil  
Donald McQuaig  
Don Meador  
Megalith Power Alternatives Ltd.  
John Melnichuk  
Lydia Melnichuk  
Menchie's  
Grant Menzies  
Peter Merlo  
Cathy Merrett  
Mark Michalysheh  
Michelle King - Sutton Group  
Midwest on Main  
Alf Mielke  
Miga Enterprises Inc.  
Peter Miles  
Bodil Millan  
Brenda Millar  
Dawn Miller  
Candice Mills  
Sue Mills

Minhas Bros. Holdings Ltd.  
Sanja Minic  
MNP LLP  
Irene Moe  
Trevor Moen  
Patricia Montalbo  
Vernon Moore  
Morguard (Prairie Mall)  
Jackie Morissette  
Carmen Morren  
Everett Morrison  
Grace Mosenko  
Mountain Rose Beauty Spa  
Tina Moxness  
Sigrid M. Muehrer  
Shaun Muldoon  
Charles Mumert  
Fiona Munroe  
Justin Munroe  
Susan Munteanu  
Sandra Nash  
NAW Promotions  
Rob Neil Neil & Associates (2006) Inc.  
Betty May Nellis  
Karin Neufeld  
New Horizon Co-operative Ltd.  
Dean Nickerson  
Damian Nielsen  
Shelly Nikolaychuk  
Bill Nilsson  
NoBob Enterprises Ltd.  
Robert Normandeau  
Donald Normington  
Grace Norris  
Northern Blooms Flowers & Gifts  
Northern Dental & Hygiene Centre  
Northern Mat & Bridge  
Northern Metalic Sales (AB) Ltd.  
Northern Piecemakers Quilt Guild  
Northern Spirit Local # 6  
Norwest Construction and  
Management Ltd.  
NTL Pipeline Inc.  
Nurturing Sleep Solutions  
Catherine Nychka  
Helen O'Donnell  
Cindy O'Flaherty  
Ken O'Shea  
James Obniawka  
Aisha Odaibo  
Felix Odaibo  
Brent Oilund  
Lester Oilund  
OK Drywall

Lawrence Olivier  
Patricia L. Olson  
On-Track Supplies & Equipment Ltd.  
OpsMobil  
Original Joes Restaurant and Bar  
Evelyne Otto  
Jack Ouellette  
Brent Pacholok  
Dave Palser  
Dieter Pankow  
Cindy Park  
Cynthia Parker  
Parmesha Pillay Professional Corporation  
Joel Pasia  
Cindy Paton  
Pattison Outdoor Advertising  
Paul Gerow Trucking  
Peace Country Land Ltd.  
Peace Draft Horse & Pulling Club  
Dan Pearcy  
Gordon Pearcy  
Maureen Pearcy  
Aaron Pelman  
Pembina Pipeline Corporation  
Charlotte Penson  
Penson School  
Katherine Pernal  
Peter Meyerhoffer  
Corrine Peterson  
Philips Lifeline  
Doris Plante  
Randall Plumridge  
Podollan Hotel  
Jean Polasek  
Pomeroy Inn & Suites Inc.  
James D. Pope  
Prairie Coast Equipment  
Prairie Villa Insurance Ltd.  
Precision Well Servicing  
Camelia Presley  
Brenda Prince  
Larry Prince  
Professional Association of Resident  
Physicians of Alberta  
Pry Enterprises Inc.  
Geno Pucci  
Q99 FM  
QE II Hospital (Pediatrics)  
QEII Hospital - Diagnostic Imaging  
Department  
R. Oilfield Hauling  
R.E.D. Holdings Inc. o/a McDonald's  
Restaurant  
Chloe Radbourne  
Darrell Radbourne  
Donna Radbourne

# 2014-2015 DONOR LIST

Maxine Rowe  
Royal Purple #318 Eaglesham  
Rural Discovery Destination Marketing  
Fund Ltd.  
Russel Metals Inc.  
Robert Rycroft  
Albin Saastad  
Susan Saastad  
Dale Sales  
Dennis Sampson  
Warren Samson  
Carrie Sandboe  
Joan G. Sandy  
Ken Sargent  
Sean Sargent  
Megan Savard  
Save-On Foods  
Ella-May Sawers  
Denis Scantland  
John Schoepp  
Jamie Schoorlemmer  
Bernice Schudlo  
Bernhard H. Schuett  
Scotiabank  
Dustin Scott  
Estate of Robert M. Scott  
Sean Sargent Toyota Ltd  
Stephen Seaward  
Herman Sellin  
Donna Senay  
Servus Credit Union Ltd.  
Seven Generations Energy Ltd.  
Denise Shank  
Kathleen I. Shannon  
Wendy Sherk  
Gail Shewchuk  
Genevieve Shmyr  
Edith Shofner  
Shoppers Drug Mart  
Rhonda Side  
Side Management  
Sil Accounting Services  
Silver Anvil Welding  
Betty Sinclair  
Kim Skow  
Mary Smichura  
Amy Smith  
Carolyn Smith  
Kelly Smith  
Mary Smith  
Rob Smith  
Wayne Smith  
Snapshot Studio & Photo  
Danny Somerville  
Gil Sonnenberg  
South 40 Dental  
Holly Spence  
Sportswear Plus  
Julie Spurrell  
St. Gerard Catholic School  
St. Mary's Catholic School

Christine Stalker  
Louis Stark  
Station 29 Photography Studio  
William Stefura  
Chris Stetsko  
Jim Stokes  
Ray Stokke  
Patricia Storle  
Brenda Stouffer  
Todd Strang  
Rob Strasdin  
Strasdin Orthodontics  
Kayla Stremel  
Strider Kids GP  
Joan Sullivan  
Sunburst Graphics Ltd.  
Suncapsule Tan 'n Fitness Centre  
Suncor Energy Services Inc  
Superior Show Service Inc.  
Brenda Swan  
Swan City Rotary  
Cara Swanson  
Wendy Taks  
Monique Tardif-Blakley  
Tartan Auto Body Ltd  
Leigh Taylor  
Joy Teal  
Tech Spec NDT Ltd.  
Tervita Corporation  
Veronica Tews  
The Alberta Rural Physician  
Action Plan  
The CAT Rental Store  
The Healthy Feet Clinic Inc.  
The Keg Steakhouse and Bar  
The Vine Luxury Spa  
The Whispering Tree  
Belle Thomas  
Vikki Thomas Welshman  
Andreas Thomi  
Tim Hortons  
Tim Hortons - (Sips Restaurants Ltd.)  
Tim Hortons - Allard Group  
Bryan Tink  
Jean Tissington  
Inge Toerper  
Karl Toerper  
Rhonda Tofteland  
Alfred Tom-Huete  
Leonard Torgerson  
Toronto Dominion Bank and Trust  
Total Enerflex  
Town Centre Liquor Store  
Gregory Townsend  
Township 71 Bar & Grill  
TransCanada PipeLines Ltd  
Sarah M. Trelle  
Estate Of Helen Trenaman c/o  
Lyle D. Carlstrom  
Trinity Body Art  
Tubular Optimization Services

Glen Tunke  
United Way  
United Way of Grande Prairie & Region  
University of Alberta  
Darlene Upshall  
Elisa Urbine  
Vector Communications  
Evelyne Viens Dobish  
Evelyn Vigen Vintage Wine & Spirits  
Visa Truck Rentals (1991) Ltd.  
Cara L. Voss-Seiler  
Jane Waayenberg  
Alan Wagner  
Jackie Wallan  
Simon Wallan  
Audrey Walsh  
Len Wangen  
Wanham Ladies Progressive Club  
Wannawafel  
Wapiti Gravel Suppliers  
Walter Ward  
Carrie Warman  
Wendy Warner  
Cayla Webber  
Welcome Wagon Ltd.  
Jack Wells  
Western Star Trucks (North) Ltd.  
Toni Wheeler Dumais  
Ben White  
Gladys Wiebe  
Tim Wiebe  
Bernette Wiens  
Harvey Wiens  
Julie Wilcox  
Bonnie Wilkinson  
Christine Williams  
James Willsey  
Karen Willsey  
Kevin Willsey  
Willsey Davis & Co. LLP  
Bev Wilson  
Brent Wilson  
Brian Wilson  
Dwayne Wilson  
Cyril Wiskar  
Brad Wittur  
Wold Reunion 2008  
Ryan Wrath  
Frank Wright  
Gary Wrzosek  
Christine Yakel  
Doug Yanishewski  
Olga Yanishewski  
YL Country - KIX FM  
Young Persons and Families  
w/ Cancer Society of Northern AB  
Lawrence Yurchyshyn  
Elaine Zaichkowsky

Letty Ramirez-Smith  
Travis Rappel  
Sargy Raskauskas  
Nicole Rasmussen  
Linda Rathburn  
Betty Rautenstrauch  
Dorothy Ray  
Jason Ray  
RBC Foundation  
RBC Royal Bank (South)  
RBN Supervision Ltd  
Real Canadian Superstore  
Ruby Reed  
Ron Regnier  
Bernard Reid  
Reilly Transfer Ltd.  
RejuvaDERM Cosmetic Dermatology  
and Laser Centre  
Justina Rempel  
Sharon Rempel  
Rentco Equipment Ltd.  
Rentco's Tool Shed  
RIA Boutique  
Valerie Richard  
Gwen Richards  
Ridgevalley School District #2653  
Risley Enterprises Ltd.  
Karyann Ritchie  
Ritchie Bros. Auctioneers  
Avis Riva  
Riverbend Seniors Golf  
Steven Roberts  
John Robertson  
William Robertson  
Kim Robideau  
Brenda Robinson  
Rock 97.7  
Bethany Rose Rosenau Transport Ltd.  
Rotary Club of Grande Prairie  
Courtney Roth  
Kurt Roth  
Holly Rothlisberger



400 Windsor Court  
9835-101 Avenue  
Grande Prairie, Alberta  
T8V 5V4

Phone: (780) 539-4110  
Fax: (780) 532-1350  
Email: [info@fletcherudryk.com](mailto:info@fletcherudryk.com)

## INDEPENDENT AUDITORS' REPORT

To the Directors of Queen Elizabeth II Hospital Foundation

We have audited the accompanying financial statements of Queen Elizabeth II Hospital Foundation, which comprise the statement of financial position as at March 31, 2015 and the statements of changes in fund balances, revenues and expenditures and cash flows for the year then ended, and a summary of significant accounting policies and other explanatory information.

### Management's Responsibility for the Financial Statements

Management is responsible for the preparation and fair presentation of these financial statements in accordance with Canadian accounting standards for not-for-profit organizations, and for such internal control as management determines is necessary to enable the preparation of financial statements that are free from material misstatement, whether due to fraud or error.

### Independent Auditors' Responsibility

Our responsibility is to express an opinion on these financial statements based on our audit. We conducted our audit in accordance with Canadian accounting standards for not-for-profit organizations. Those standards require that we comply with ethical requirements and plan and perform the audit to obtain reasonable assurance about whether the financial statements are free from material misstatement.

An audit involves performing procedures to obtain audit evidence about the amounts and disclosures in the financial statements. The procedures selected depend on the auditor's judgment, including the assessment of the risks of material misstatement of the financial statements, whether due to fraud or error. In making those risk assessments, the auditor considers internal control relevant to the entity's preparation and fair presentation of the financial statements in order to design audit procedures that are appropriate in the circumstances, but not for the purpose of expressing an opinion on the effectiveness of the entity's internal control. An audit also includes evaluating the appropriateness of accounting policies used and the reasonableness of accounting estimates made by management, as well as evaluating the overall presentation of the financial statements.

We believe that the audit evidence we have obtained is sufficient and appropriate to provide a basis for our audit opinion.

### Basis for Qualified Opinion

In common with many charitable organizations, the Foundation derives revenue from various cash sales, donations and contributed materials, the completeness of which is not susceptible of satisfactory audit verification. Accordingly, our verification of these revenues was limited to the amounts recorded in the records of the Foundation and we were not able to determine whether any adjustments might be necessary to contributions, excess of revenues over expenditures, current assets and net assets.

### Qualified Opinion

In our opinion, except for the possible effects of the matter described in the Basis for Qualified Opinion paragraph, the financial statements present fairly, in all material respects, the financial position of Queen Elizabeth II Hospital Foundation as at March 31, 2015 and the results of its revenues and expenditures and its changes in fund balances and cash flows for the year then ended in accordance with Canadian accounting standards for not-for-profit organizations.

*Fletcher Mudryk & Co.*

Grande Prairie, Alberta  
June 24, 2015

Chartered Accountants

QUEEN ELIZABETH II HOSPITAL FOUNDATION

Changes in Fund Balances  
Year Ended March 31, 2015

	Operating Funds	Flow Through Funds	Internally Restricted Funds	Externally Restricted Funds	Endowment Funds	2015	2014
<b>NET ASSETS - BEGINNING OF YEAR</b>	\$ 2,994,012	\$ 657,047	\$ 918,871	\$ 538,434	\$ 3,904,931	\$ 9,013,295	\$ 8,423,123
Excess of revenues over expenditures	1,356,937	-	-	-	-	1,356,937	590,172
Transfer to restricted funds - external	(20,132)	-	-	20,132	-	-	-
Transfer from restricted funds - external	34,903	-	-	(34,903)	-	-	-
Transfer from restricted funds - internal	-	10,654	(10,654)	-	-	-	-
Transfer from restricted funds - internal	607,676	-	(607,676)	-	-	-	-
Transfer to restricted funds - internal	(662,040)	-	662,040	-	-	-	-
Transfer to endowment funds	(8,283)	-	-	-	8,283	-	-
Transfer to flow through funds	(114,588)	114,588	-	-	-	-	-
Transfer from flow through funds	45,449	(45,449)	-	-	-	-	-
<b>NET ASSETS - END OF YEAR</b>	\$ 4,233,934	\$ 736,840	\$ 962,581	\$ 523,663	\$ 3,913,214	\$ 10,370,232	\$ 9,013,295

Please see accompanying notes to financial statements



QUEEN ELIZABETH II HOSPITAL FOUNDATION

Statement of Financial Position  
March 31, 2015

	2015	2014
<b>ASSETS</b>		
<b>CURRENT</b>		
Cash (Note 3)	\$ 693,775	\$ 1,048,796
Short-term investments (Note 4)	2,092,915	1,103,842
Accounts receivable	26,022	31,041
Inventory	1,520	1,970
	<b>2,814,232</b>	2,185,649
RESTRICTED CASH AND INVESTMENTS (Note 5)	<b>6,299,757</b>	5,603,283
CASH SURRENDER VALUE OF LIFE INSURANCE	<b>1,347,622</b>	1,296,092
	<b>\$ 10,461,611</b>	\$ 9,085,024
<b>LIABILITIES</b>		
<b>CURRENT</b>		
Accounts payable	\$ 81,379	\$ 71,729
Deferred income	10,000	-
	<b>91,379</b>	71,729
<b>NET ASSETS</b>		
<b>FUND BALANCES</b>		
Operating funds	4,233,934	2,994,012
Flow through funds	736,840	657,047
Internally restricted funds	962,581	918,871
Externally restricted funds	523,663	538,434
Endowment funds	3,913,214	3,904,931
	<b>10,370,232</b>	9,013,295
	<b>\$ 10,461,611</b>	\$ 9,085,024

ON BEHALF OF THE BOARD

\_\_\_\_\_ Board Member

\_\_\_\_\_ Board Member

Please see accompanying notes to financial statements



QUEEN ELIZABETH II HOSPITAL FOUNDATION

Statement of Revenues and Expenditures

Year Ended March 31, 2015

	2015	2014
<b>REVENUES</b>		
Designated donations	\$ 522,413	\$ 566,192
General donations	404,216	573,663
Increase in cash surrender value of life insurance	51,530	58,419
Investment income net of administration fees	165,030	82,194
Subsidy from Alberta Health Services	25,000	25,000
Bank machine commissions	18,923	19,608
Lifeline income	11,965	13,375
Insurance premiums	13,076	12,577
Realized gains on marketable securities	142,340	169,092
Unrealized gains on marketable securities	117,969	55,199
Visual Arts subsidy	6,440	6,405
	<u>1,478,902</u>	<u>1,581,724</u>
<b>EXPENDITURES (Schedule 1)</b>	<u>454,657</u>	<u>357,448</u>
<b>EXCESS OF REVENUES OVER EXPENDITURES FROM OPERATIONS</b>	<u>1,024,245</u>	<u>1,224,276</u>
Net program revenue (expenses)		
Festival of Trees (Schedule 2)	421,923	357,791
Therapeutic Clown Program (Schedule 3)	(3,988)	(1,057)
	<u>417,935</u>	<u>356,734</u>
<b>EXCESS OF REVENUES OVER EXPENDITURES BEFORE DISBURSEMENTS AND OTHER</b>	<u>1,442,180</u>	<u>1,581,010</u>
<b>DISBURSEMENTS AND OTHER</b>		
Bursaries awarded	34,433	30,898
Equipment and donations	50,810	959,940
	<u>85,243</u>	<u>990,838</u>
<b>EXCESS OF REVENUES OVER EXPENDITURES</b>	<u>\$ 1,356,937</u>	<u>\$ 590,172</u>

Please see accompanying notes to financial statements



QUEEN ELIZABETH II HOSPITAL FOUNDATION

Statement of Changes in Cash Flows

Year Ended March 31, 2015

	2015	2014
<b>OPERATING ACTIVITIES</b>		
Excess of revenues over expenditures	\$ 1,356,937	\$ 590,172
Items not affecting cash:		
Realized gains on marketable securities	(142,340)	(169,092)
Unrealized gains on marketable securities	(117,969)	(55,199)
	<u>1,096,628</u>	<u>365,881</u>
Changes in non-cash working capital:		
Accounts receivable	5,019	(2,269)
Interest receivable	-	52,157
Inventory	450	(1,200)
Prepaid expenses	-	8,764
Accounts payable	9,650	22,334
Deferred income	10,000	-
	<u>25,119</u>	<u>79,786</u>
Cash from operating activities	<u>1,121,747</u>	<u>445,667</u>
<b>INVESTING ACTIVITIES</b>		
Short-term investments	(728,765)	(437,836)
Restricted cash and investments	(696,473)	595,392
Cash surrender value of life insurance	(51,530)	(58,419)
	<u>(1,476,768)</u>	<u>99,137</u>
Cash from (used by) investing activities	<u>(1,476,768)</u>	<u>99,137</u>
<b>INCREASE (DECREASE) IN CASH</b>	<u>(355,021)</u>	<u>544,804</u>
CASH - BEGINNING OF YEAR	<u>1,048,796</u>	<u>503,992</u>
<b>CASH - END OF YEAR (Note 3)</b>	<u>\$ 693,775</u>	<u>\$ 1,048,796</u>

Please see accompanying notes to financial statements



*"Volunteerism is the voice of the people put into action. These actions shape and mold the present into a future of which we can all be proud. "*

**- Helen Dyer**

## Volunteers Are Precious Gifts to the QE II Hospital Foundation

In recognition of our volunteers and the countless hours they contribute to the QE II Hospital Foundation, we would like to express our deepest gratitude. From a single, random act of kindness to a scheduled commitment, every act of caring improves the quality of life for others. Sincerely, thank you to every individual volunteer. Your contribution is immeasurable.



10409 98 Street  
Grande Prairie, AB T8V 2E8  
Ph: 780-538-7583  
Fax: 780-538-7597