



Grande Prairie Regional Hospital Foundation

2019 - 2020

Annual Report





Not all of us can do great things. But we can do small things with great love.

~Mother Teresa

Table of Contents

Board of Trustees and Staff of the Foundation.....	2
Message from the Board Chair and Executive Director.....	3
Message from Alberta Health Services.....	4
Ways to Give.....	5
The Art of Healing: How a 15-Year-Old Found Life.....	6
Patient Care Programs.....	9
Bursary and Scholarship Recipients.....	11
The Gift of No Complications.....	12
The Gift of Bravery & Comfort.....	13
You are the Key to Care.....	14
Leave a Legacy.....	16
Festival of Trees.....	17
Become a Supporter.....	19
The Gift of Clear Vision.....	20
Community Events.....	21
Events in Supporting GPRHF.....	22
2019 - 2020 Donors.....	23
2019 - 2020 Financial Statements.....	28



**Caring about the future of
healthcare for our communities
and our families.**
~Our Mission

Board of Trustees

Chair Kim Drever

Co-Chair Todd Strang

Treasurer Cecile Neil

Past Chair Serge Martin

Dr. Richard Beekman

Dr. Len Brezac

Stacy Greening

Scott Lissoway

Cindy Park

Sean Sargent



Foundation Staff

Executive Director Keith Curtis

Senior Development Officer Dawn Miller

Communications Officer Melissa Savich

Aministrative Coordinator Christine Jones

Finance Officer Val Carnwell

Visual Arts Coordinator Fiona Munroe

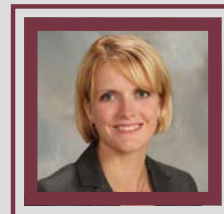
Therapeutic Clown Buttery

**Engaging with our
communities to support
excellence in healthcare.**

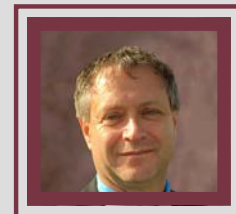


~Our Vision

Message from the Board Chair & Executive Director



Kim Drever



Keith Curtis

Your Generosity is the Future of Healthcare in Our Region

We are grateful for all of you, our donors, volunteers, sponsors and supporters and thank you deeply for your continued generosity and support. Your donations, volunteer hours, and support have had an immense impact on enhancing healthcare in your community and across the region. You have made a difference in the lives of many of your friends and neighbours.

Your generosity allows the Grande Prairie Regional Hospital Foundation to provide funding for additional medical equipment, educational opportunities for healthcare providers and improving healthcare programming throughout your region. By supporting your Grande Prairie Regional Hospital Foundation, local residents can receive high quality healthcare, here, at home. Rather than spending precious time and resources on travelling to larger centres.

You have ensured that your hospital's medical staff have opportunities to further their education to bring world class healthcare to your region while encouraging the recruitment and retention of healthcare professional to the Peace Region.

You were the rest of the story for ... your hospital's tiniest patients, providing comfort and companionship while coaching them through difficult times when they needed care.

You were the rest of the story for ... patients at your hospital so they can receive their health care needs close to home. You ensured that the healthcare professionals at your hospital had access to advanced medical equipment which decreases potential complications and the need for extended care.

You were the rest of the story for ... your friends, family, neighbours and colleagues so they can access high quality care at our hospital. Your donations supported the purchase of enhanced medical equipment and patient centric care, allowing them to receive care closer to home.

You were the rest of so many stories ... in so many ways this past year. You have provided funding in areas of your hospitals and community centric healthcare this year including Mental Health, Homecare, Seniors Care, Emergency Medical Services, Operating Room Services and so many others.

Through your generosity of resources and time, you were the rest of the story for so many. We are grateful to each of you. You, our donors, sponsors, volunteers and the medical care teams at our hospital, you have made this past year better for patients, families and our healthcare teams.

Caring about the future of healthcare for our communities and our families is only possible with your continued generosity and support. Thank you.

Kim Drever
Board of Trustees
Chairperson

Keith A. Curtis
Executive Director
Grande Prairie Regional Hospital Foundation

Message from



Alberta Health Services

We have the honor at Alberta Health Services of working with foundation partners who make remarkable contributions towards healthcare in our community. We are grateful for our Grande Prairie Regional Hospital Foundation partners and their enduring support for our patients, their families and our valued staff. Across Alberta, foundations, auxiliaries, health trusts and their generous donors raise approximately \$250 million annually for medical equipment, programs and services, helping us provide the best possible care.

Your contributions impact all areas of healthcare in our community. As the new Grande Prairie Regional Hospital project progresses, the foundation's Key to Care Capital campaign continues to be a crucial element of the new hospital. Every contribution helps to bring innovative new equipment, educational opportunities and warm welcoming spaces to the new hospital.

Community donors are making a real difference in the lives of our patients, their families and the healthcare teams who care for them. As we head into a time of uncertainty with the identification of a new virus starting to spread globally, there will be increasing demands on our health care system and our providers. The support of the Grande Prairie Regional Hospital Foundation and its many partners will continue to be very important for our teams as they care for our community and those individuals who require health care. We're incredibly appreciative of the many donors, volunteers and sponsors who give a piece of themselves to support healthcare in Grande Prairie and region. Your generosity offers inspiration and hope at a time when we need it most.

Thank you for your unwavering commitment and support. We look forward to our continued work together.

Stacy Greening
Senior Operating Officer
Area 9 Grande Prairie & Area, North Zone Addiction
& Mental Health

Dr. James Pope
Associate Zone Medical Director
Area 9



Ways to Give

Generosity comes in many forms. Although the Foundation's primary goal is to raise funds for equipment, patient care programs and healthcare education at your hospitals, there are other ways you can support your hospitals and healthcare.

The Foundation works directly with your hospitals' staff to identify items that can comfort, calm and help patients and families while they are receiving care. It is through your material donations that these needs are filled, for this, we thank you from the bottom of our hearts.

Items Needed for Your Hospitals

Mackenzie Place

Blankets (lap size and full size)
Slippers
Large print word search and Sudoku
Travel Size Toiletries

Pediatrics/NICU

Teddy bears (new with tags on only)
New toys
Knit baby beanies
Bonding hearts (made in pet & smoke free homes)

Emergency & Ambulatory Care

Colouring books
Crayons

Labour & Delivery

Infant car seats & covers
Nursing covers

Mental Health Unit

Travel size toiletries (shampoo, conditioner, bar soap, deodorant, unscented hand lotion)
Combs
Slippers and shoes
Comfortable clothes for both men and women
Underwear (men's and women's, all sizes)
Socks

Recreation Therapy

Art supplies
Adult puzzles (500 pieces or less)
Craft Supplies
Scrapbooking Supplies
Wool
Board Games
Large Print Word Search & Sudoku



SPVC South Peace Volleyball Club U16



The Badine Family

The Art of Healing:

How a 15-Year-Old Found Life



Imagine being a 15-year-old boy weighing a meager 75 lbs and addicted to pain medication, with little hope, separated from the warmth of family alone in a hospital bed. That is the story of Grant Berg owner of Grande Prairie's Grant Berg Gallery. In this article, Grant takes you on a journey showing you the strength of escape and healing through art.

When I was a teenager it was discovered that I had an issue with my left kidney, it didn't work. Over the next year, I had six major surgeries, my health declined after each surgery. My health declined to the point that I was 15 years old, weighed 75 lbs and was addicted to pain medication.

One of the painkillers I received would paralyze my leg for the day, I couldn't walk. A nurse told me that if she gave the same painkillers to a perfectly healthy horse it would die in minutes. The same medication I would receive every four hours, it was a very dark time in so many ways.

The first two surgeries were to try to fix the kidney. The third surgery was to remove it, after which they kept me in a drug-induced coma for a number of days. The number of days is hard to recall exactly. While in this "coma" my brain was awake, to everyone around me, yet my body was asleep.

My body was fully sedated and out for the count, but my mind and ears were wide awake. At the time, my bed backed onto the teen room on our hospital floor and in the morning, they would turn on the radio and have it on all day and turn it off at night.

My mind found salvation in that music, riding the notes and melody, the beauty and power of voices like Stevie Nicks, Lou Gramm and Steve Perry. I was trapped in my mind with seemingly no way out until I found the true magic of music. My mind rode those melodies. I still visualize bars of music like the tracks of a rollercoaster in the night, taking me up and bringing me down, and a turn to the left and the right, taking me for a ride and bringing me in safely for a new ride to come along.

**I was trapped in
my own mind
with seemingly
no way out,
until I found the
true magic of music.**

The kidney removal did not go well. Something was horribly wrong. So off to surgery four, I said goodbye to my family as we didn't know if I would survive the day. I woke up on the operating table for a few moments... unable to move, I couldn't even open my eyelids to alert the surgeon I was awake. I was sure this was death, as I felt myself fading I thought I was dying...I was shocked when I woke up. I was alive! My life had changed at that moment. At 15 years old I knew the value of life as I faced death.

Once I was able to walk, I would wander through the halls and look at the art on the walls, each painting was an escape from my reality. I would stare into each and get lost, taking a mental trip into a world somewhere else, a world created by someone else.

Once I had looked at every painting on my floor for countless hours, I would go to other floors of the hospital to enjoy their art. All told I was in and out of the hospital for over a year. Getting lost in those paintings, I learned to tune into the energy and vibrancy the artist put into the work. The escape for my mind and soul had changed me forever.

As many of you know, I was in broadcasting for 29 years. Started in TV but my soul needed music every day, so I quit TV where I was a producer of Question Period at the Alberta Legislature.

I made the change to radio and made a wonderful career of it. I also wanted to share the beauty and joy of music with as many people as I could. As I can't sing, nor play an instrument (damn school cutbacks in grade 3) radio was the best platform. I do write lyrics and poetry and any solid melodies get sung into my phone. I was lucky to surround myself in music and share that with people for 29 years.

The dreams and aspirations of teenage Grant were different than the dreams and aspirations of Grant today. With my new aspirations in mind, I decided to walk away from radio and share my love and appreciation of visual art, paintings and sculpture with the world.



I learned to tune into the energy and vibrancy the artist put into the work...the escape for my mind and soul had changed me forever.

I am not university trained in art; I don't know art speak. I just know what touches me and what I'm in tune with. The artists we have in our galleries have wonderful souls and people feel it when they come in.

Everyone has a different perception of what art is, to each person that perception is honest to them and their experience. What I carry is honest to me and my experience. While I have mad respect for photorealistic paintings and 100% acknowledge the masterful skill blows my mind, I am drawn to more impressionistic art, Group of Seven and the Canadian school.

It's not about what you see, rather what you feel. Each artist taking something that is or was real and putting it through their experience and their soul and re-presenting it to the world from the honesty of their soul vs their eye and hand.

From the darkest days in my life, came the most beautiful things that I still share to this day.

As a teenager, physically and absolutely devastated in every way, I discovered not only life but the magic and true value of music and art. So much so that I have spent my entire adult life working to bring that to people. Almost 3 decades in broadcasting and four years owning an art gallery, and hopefully many more.

As many people reading this who are in their own form of isolation, know that music and art are there. Wonderful escapes. If you look at your walls and see box store decor, I get why it's there, but plan on cycling it out for something that gives you an emotional connection, that takes you somewhere and provides an escape each day from troubles and struggles.

Move away from the superficial and connect with what surrounds you. Turn on the music that dissolves the stress and unties the anxiety. We need art, no different than we need good nutrition, we feed our bodies, but we also need to feed to our souls.

I want to thank the Grande Prairie Hospital Foundation for managing the art collection the hospital has. The hospital has a permanent collection and it's exhibitions featuring local artists. The value of art in hospitals is immeasurable to the healing process, both physically and mentally.

Be well and take care and take this opportunity to discover the beauty that art brings.

**Arts have a positive effect on
healing, improve clinical outcomes,
decrease the length of stay & can
even increase pain tolerance**

~Journal of the Royal Society of Medicine

Share Your Story...

Your story is part of a bigger story. We want to hear your positive healthcare story.

info@gphospitalfoundation.ca | (780)538-7583

Patient Care Programs



The White Rose Program

The White Rose program provides loved ones experiencing loss with “comfort bags”, brochures to assist with grief and planning, as well as an opportunity to create a memento. Families also receive a parking pass, blankets, snacks and coffee so they can focus on spending their time with their loved one.

The program also ensures that healthcare providers and visitors on the unit know that a family is experiencing a loss and to be quiet and respectful during a very difficult time.

This program is funded and run by you our donors and volunteers. Your support brings a great deal of solace to families facing an end of life situation.

Born to Read

In 2019, the Grande Prairie Public Library and the Hospital Foundation came together with the shared goal of promoting early literacy to new parents. Thanks to the generous support of The Rotary Club of Grande Prairie, babies born at your hospitals or delivered by a local midwife will receive their first book.

“Babies benefit from hearing their caregivers read aloud right from birth,” says Jacob Fehr, Head of Children’s & Teen Services at the Grande Prairie Public Library. “They learn from the sounds and cues around them, which helps them develop a large vocabulary by the time they enter school.” Early literacy also has other positive impacts on babies. “Reading together creates a strong family bond,” says Fehr.

Before leaving the hospital, parents receive a bag containing a carefully selected board book, information about the Grande Prairie Public Library and the Hospital Foundation. The first book chosen was Boo Hoo Bird by Jeremy Tankard, followed by another from the same series – Hungry Bird. For more board book suggestions, please visit www.gppl.ca/borntoread



Therapeutic Clown & Bravery Beads



Imagine how scary and intimidating a hospital can be to a young person. There are children that stay in hospital and spend days, months and sometimes even longer, away from their home and family.

Butterfly the Therapeutic Clown helps minimize the stress for our young patients and their families during treatments, while having medical procedures, or to fill the time while family members wait for a loved one to have surgery.

Although our medical personnel are essential to the health of patients, to a child Butterfly could very well be the most important person that they meet in the hospital. She is the only person at the hospital who is not doing a medical procedure during their visit.

Butterfly also shares precious keepsakes with young patients through the Bravery Bead Program. When a child begins their difficult journey, they are given a necklace with their name on it. As they undergo treatments, surgeries, chemo or any other therapy, they will receive a special bead signifying the experience. These are called Bravery Beads and commemorate these milestones.

Many wear their bravery beads as a medal or badge of courage.

The Therapeutic Clown and Bravery Bead Programs are funded through your donations. Without you, we would not have this valuable program. Your support truly makes a difference in children's lives every day and in the lives of their families.

The Art of Healing

The Grande Prairie Regional Hospital Foundation's Visual Arts Program brings beauty into daily life at your hospitals. There are two rotating gallery spaces within your hospitals, the Courtyard Gallery and the Art Cubes.

You will find new exhibitions in the galleries every two months. These wonderful spaces show works of art from talented Peace Country artists and are often available for purchase. Any art purchased from these gallery spaces supports local artists with a portion of the proceeds going to the Foundation to support your hospitals and healthcare.

Visual Arts ensure that the hospital is decorated with care to inspire a sense of calm, healing and comfort for patients, families, visitors and hospital staff.



Alicia Doerksen
Art of a Country Girl

Bursary & Scholarship Recipients

Congratulations to all the 2020 Bursary and Scholarship Recipients!

Striving for Nursing Excellence

Kajal Patel
Dave Coutlier
Sara Lyons



Genevra Perrott

Northern Alberta Rural Physicians Scholarship

Rebecca Sherk



Jenna Galway

Dr. Phil and Vi Sunohara Nursing Bursary

Tyra Death
Kristine Romero-Mbanefo

Sarah Joan Alward Bursary

Tyra Death
Sara Lyons
Kristine Romero-Mbanefo
Keeley Burns
Kajal Patel
Jenna Galway
Genevra Perrott



Sara Lyons



Keeley Burns

The Gift of No Complications



This year your hospitals received a brand-new Argon Plasma Coagulator through a generous donation from Paramount Energy Services.

This specialized medical equipment will be used in Ambulatory Care to help control bleeding from the gastrointestinal tract. This new equipment will allow staff to cauterize bleeds during scope procedures. Using this equipment decreases potential post-procedure complications and the need for additional care, shortening the recovery timeline for patients.



Thank you, Paramount Energy Services, for your gift to Ambulatory Care at your hospitals. This new equipment will enhance care for your family, friends, neighbours and coworkers across this region, and for years to come.

It is through your donations and those of organizations such as Paramount Energy Services that help to keep your community healthy.



Paramount Energy Services

The Gift of Bravery & Comfort



This year many of the young patients at your hospital got to meet one of two of the hospital's new MEDis (Medicine and Engineering Designing Intelligence) – a human-interactive robot. Standing at only 2-feet tall, MEDi has a big job: help the children it works with feel at ease and better cope with the medical procedures they are undergoing.

MEDi greets each child it sees as they come in for a procedure. Once it has introduced itself, it explains the procedure to the young patient and distracts them through interactive dialogue – telling stories, dancing, playing games and even offers high-fives.



The two new robots were purchased through your support of Grande Prairie Costco's Pediatric Penguin Campaign. Last year the campaign focused on raising funds to buy these two Pediatric MEDi Robots for use in our hospital. Thank you Costco, for all that you do for your community and hospitals.

Fundraising is the gentle art of teaching the joy of giving.

~Hank Rosso



Costco Grande Prairie

You are the Key to Care

The Key to Care Campaign began in 2015 with a goal to raise \$20 million for the new Grande Prairie Regional Hospital with a focus on four key areas to enhance care for you, your family, friends, neighbours and coworkers.

Only one year remains in the campaign. Because of your support and donations to date, the campaign is almost 25% away from reaching the goal of \$20 million. This year we will be reaching out to you to let you know about opportunities available through the Key to Care Campaign and ask for your help to get to the goal.

Like you, we care about the future of healthcare for our communities and our families. By following this mission, together with your support, we are able to support the vision of engaging with our communities to support excellence in healthcare.

The Key to Care Capital Campaign is looking forward to the future, creating ways to enhance care in your region today and for generations to come.

Strengthening healthcare is important for every person in our region. The impacts of care received will be felt by every person at some point in their lives. Being able to offer new services, patient care programs, and educational tools for patients and health care providers creates an environment that promotes wellness and healing.



Your gift to the Key to Care Capital Campaign will have a positive impact on everyone in our region. Your gift ensures that your hospitals provide a high level of care, offer services that are not normally available outside of large urban centers and increase positive outcomes for patients.

County of Grande Prairie No. 1

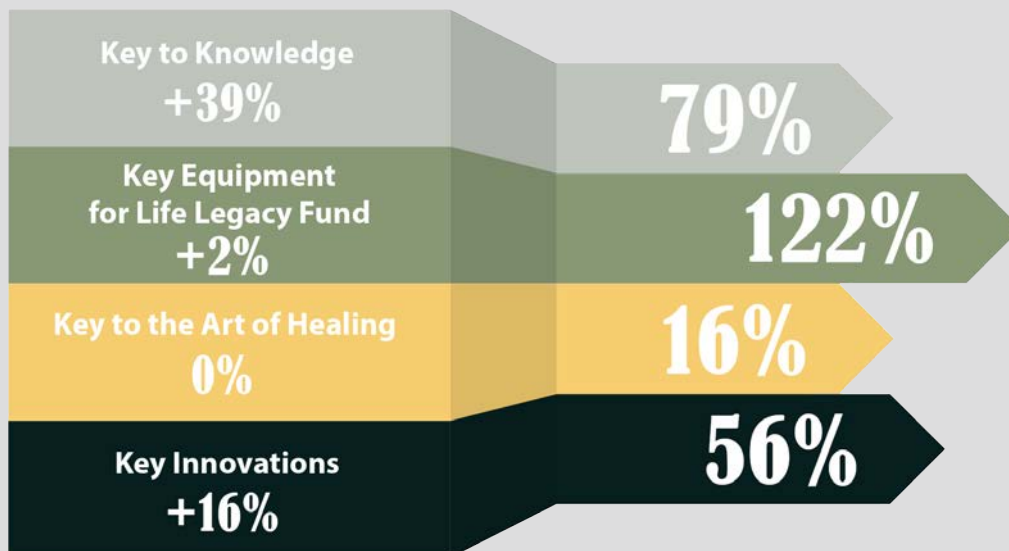
Through the Key to Care Capital Campaign, we are focusing on enhancing healthcare in four key components:

- **Key Innovations** will allow for the purchase of specialized medical equipment for the Grande Prairie Regional Hospital and the QEII Hospital. Innovative equipment will allow us to bring new and exciting technological advancements to patients here in Grande Prairie.
- **Key Equipment** for Life Legacy Fund is an Endowment Fund, and the annual returns of this fund will be utilized to purchase specialized medical equipment. Contributions to this Legacy fund will ensure that the long-term needs in our region are taken care of and that patient care can be enhanced for generations to come.
- **Key to the Art of Healing** will enrich healing and well-being for patients, their families and staff throughout the hospital. Art in a hospital setting takes many forms, from artworks to sculptures to beautiful gardens and the emotional healing that music can provide. Art has been proven to improve patient outcomes and create emotional connections that create a sense of peace and calm.
- **Key to Knowledge** will develop tools that will allow patients to become knowledgeable about their health and prepare to care for themselves upon their release from the hospital. It will create educational opportunities for healthcare providers so they can leverage those opportunities to advance care in our hospitals.



Rotary Club of Grande Prairie

For more information or to donate to the Key to Care Campaign please contact Dawn Miller at dawn.miller@ahs.ca or 780-832-6471.



Leave a Legacy: Planned Giving



A planned gift is a heroic act of kindness that helps leave a lasting impact on the healthcare of your family, your neighbours, your friends, your coworkers and yourself.

The life you've built says a lot about you, your values and what you care about the most. Your gift will build a brighter future and leave a legacy that lives on through generations.

The Foundation's planned giving options provide income or potential savings now and, in the future, without affecting your present lifestyle.

Whether you choose to give through a cash donation, life insurance policy, a bequest in your will, gifts of publicly traded stock options, bursaries, endowments, RRSPs, or even gifts of property or art, there is a way to give that can suit everyone's needs.

Bequests

Gifts made through a will are called bequests. Your bequest can be a fixed amount, a specific percentage of the residual amount of the estate, and/or a specific asset. A bequest in your will to a charity of your choice will provide tax relief for your estate in the year of death.

Gifts of Life Insurance

A gift of life insurance makes it possible for you to leverage your contributions to your charity of choice. Your gift to charity is assured with a paid-up policy or through a policy with ongoing premiums paid by the donor.

Endowment Funds

The idea of creating a perpetual stream of financial support makes sense for people who see a similarity between retirement funds and endowment provisions. Only the income or a portion thereof will be used to support the Hospital Foundation.

Always seek the advice of an accredited estate planner or financial advisor when considering your legacy giving goals, and then reach out to us to have your gift can make a difference in your hospitals and healthcare.



Festival of Trees

31 Years of Tradition

In 2019 the Grande Prairie Regional Hospital Foundation together with our region celebrated the 31st annual Festival of Trees. The Festival of Trees is the largest fundraiser put on by the Hospital Foundation each year and the 31st year was bigger and better than ever! For many, the Festival of Trees represents the beginning of the holiday season.

The Festival offers a variety of fun for the whole family. From ticketed special events to general admission, there is something for everyone to enjoy. We are grateful to everyone who came out and took delight in the Festival. Some highlights were the Teddy Bear Hospital where children take on the role of healthcare providers to care for sick and injured Teddy Bears, the Secret Shop where children can shop in an adult-free environment for presents for their friends and family and all the beautiful trees.

Many of our ticketed special events sold out last year! Thank you for coming out to these events; we are truly grateful to have the support of the community. Your support allows us to work towards the mission of enhancing care for people across our region.

Last year marked the beginning of a brand-new event, Cowboy Christmas. Guests that came out for Cowboy Christmas had a great time dancing the night away with the Peace Country Western Dance Club to the tunes of Dualling Pianos. Attendees enjoyed beverages from several local wineries and distilleries including Latitude 55, Broken Oak and Broken Tine Orchard.



We are looking forward to evolving this event again this year and making it bigger and better for you to enjoy with your family and friends.

The Festival of Trees is a magical winter wonderland that is meant to bring joy to your children and yourselves alike. It is heartwarming to see the smiles and hear the laughter. Festival-goers get to enjoy a holiday experience like no other while knowing that their presence is helping the Hospital Foundation enhance care for patients and families across our region.

We are Profoundly Grateful

for all of the sponsors and volunteers who make this event a possibility year after year.

Over 400 people volunteer at the Festival every year.



Become a Supporter



The Grande Prairie Regional Hospital Foundation has many sponsorship opportunities. When you choose to be a sponsor you make a direct impact on the healthcare received by northwestern Albertans. You can help us raise awareness about our organization, bring smiles to sick children, and join us in working towards our mission.

Sponsorship is a great opportunity!

- Create brand awareness.
- Positive public relations.
- Reach a wider demographic.
- Create an emotional commitment to your brand.
- Help to shape consumer attitudes.

You can be a sponsor of...

Programs such as the Therapeutic Clown or White Rose, our donation kiosk, Festival of Trees events, areas or auction items, and publications like our Winter Magazine, Newsletter and Annual Report!

Contact the Foundation Office at (780)538-7583 for more information today!

**Volunteers do not
necessarily have
the TIME..they just
have the HEART.**

~Elizabeth Andrew



The Gift of Clear Vision



Thanks to your donations, your hospitals enhanced ophthalmic equipment this past year. This equipment provided enhancements to ambulatory care diagnostics, glaucoma detection, cataract surgery, lens implants/alignment procedures and eye treatment overall.

The new acquisition included a Tonopen, Retinoscope with Charger and Omega 500 Binocular Indirect Ophthalmoscope; a Centurion Vision System; an Alcon Luxor LX3 Ophthalmic Microscope with Attachments; and an Alcon VERION and ORA System with VerifEye + technology.

The Tonopen, Retinoscope and Omega Binocular Indirect Ophthalmoscope are technologies used in the precise assessment and diagnosis of eye conditions that impair vision. This equipment will help your doctor determine whether you may be at risk of glaucoma.

The Centurion Vision System is making cataract surgery easier, faster and more efficient than traditional methods. The ability to perform cataract surgery faster while enhancing patient safety results in an ability to increase access to cataract surgery without added cost.

The Alcon Luxor LX3 Ophthalmic Microscope with attachments provides clear optics for the surgeon while allowing nurses and trainees to see what step of the surgery the surgeon is on and if any issues are occurring.

The Alcon VERION and ORA System with VerifEye + technology is a unique technology that provides up-to-the-second guidance for intraocular lens implant power selection and intraocular lens alignment. An intra-operative system such as this goes a long way to guaranteeing that vision is optimized for you, your family, friends and coworkers.

This equipment enhancement offers ophthalmologic patients the best outcome possible when they come to your hospitals for an eye assessment, diagnosis, surgery, and follow-up care.



Community Events



The Grande Prairie Regional Hospital Foundation receives support from so many of you through your community campaigns. We are grateful to be a part of a community that places such a high value on healthcare and making a positive impact on the care given.

Thank you to all our campaign supporters and the community members that are making these campaigns such a huge success!



Tim Hortons
Smile Cookie Campaign



Shoppers Drug Mart
Love. You. Women's Health Campaign



Alberta Treasury Branch
Teddy for a Toonie Campaign



Grande Prairie River Rats
Therapeutic Clown Program Campaign

Events Supporting GPRHF



The events held in our community assist us in reaching our mission. We owe our gratitude to every person who works hard to make these events such a big hit.

Thank you to KMSC Law LLP, Aztec Engineering, the Sandra Schmirler Foundation, Shoppers Drug Mart, Tim Hortons, Victoria's Attic, 2 Day FM, the Grande Prairie River Rats and Seven Generations Energy for your continuing support.

This year has been a blast and we are looking forward to the year to come!



Seven Generations Energy Ltd
Golf Tournament



Aztec Engineering
Annual Charity Ball Hockey Tournament



22
2DayFM - Radiothon



Harley Davidson Grande Prairie - Charity BBQ

2019 - 2020

Donors

10096393 Canada Ltd (Dori Mark)
1061161 AB Ltd (Kelsey Banks-Henley)
1329463 Alberta Ltd
1804409 AB Ltd O/A Water Express
2day FM
3C Information Solutions Inc
55a Kaffee
715492 Alberta Ltd. Roil Energy Services
958561 Alberta Inc
Aaron Gallagher
Aaron Nickerson
Abimbola Kafi
Access Dental
ACDA Dance Studio
Achievers
Achievers
Adrienne Chase
Advantage North Services Ltd.
Affordable Elegance
Aimee Desiatnyk
Alana Larson
Alana Lay
Alanna Kennedy
Alberta Health Services
Alberta Lands Inc.
Alecia Dowe
Alex Doucet
Alicia Nickerson
Alicia Rogalsky
Alina Ference
Alison Gustafson
Alix Callihoo
Allison G. Mohler-Jervis
Amanda Cotton
Amanda Dawson
Amanda Dreisbach
Amanda Wordley
Amber Bourgoin
Amy Lahey
Andrea Washburn
Andrew Boone
Angela Almstrong
Angela E. Enterprises Inc
Angie Dort
Anita Lochhead
Anita Scarborough
AnnaBelle Braumberger
Anne Gourlay-Langlois
Anne Schaefer
Anne Schoepp
Anonymous (X 355)

Arlene Nowee
Ashlee Legge
Ashley Christian
Ashley Mclean
Ashley Strang
Asia Motley
Assure Lock Ltd.
AstraZeneca Canada Inc.
ATB Financial
ATB Financial - Millwoods
ATCO EPIC
ATCO Gas/ATCO Electric
Athabasca University
Audio Concepts Ltd.
Aureus Energy Services Inc.
Aurora Eye Care
Aurora Spring Water
Autoexotic Trim & Signs
Aztec Engineering
Bacon Family Fund - Strategic
Charitable Giving Foundation
Balesky Farms
Barb Shannon
Barbara S. Brown
Barry Diederich
Bearisto & Associates
Engineering Ltd
Beauty Lounge
Becky Boissoneault
Beddazelled Spa
Belle Thomas
Ben Martin
Ben Zhang
Berry Patch Fire and Safety
Training
Better Than Fred's
Betty Sandford
Bev Greentree
Big Country 93.1 XXFM
Big Hearts for Big Kids
Bill Given
Bin Sangha
BJ Jones
Blue World Treasures
Blythe Froh
Bob Dreisback
Bob Shillington
Bobbie Dawson
Bobby-Lyn Hanton
Boehringer Ingelheim (Canada)
Ltd
Bonnie Leach
Bonny Nelson
Boss Kwaliti Beauty
Boss Kwaliti Beauty

Bowling Stones Ten Pin
Entertainment
Brad Crickett
Brady Irvine
Brandie Reeve
Brandt Tractor Ltd.
Brandy Adams
Breanna Napen
Breanne Hopkins
Bree Hauck
Brenda Braun
Brenda Magnusson
Brenda Martin
Brenda Smith
Brenda Swan
Brent North
Brett Shillington
Brian Ball
Brian Meiklem
Brian Wilson
Brittany Fleck
Brittany Oracheski
Broken Oak Distilling Co.
Broken Tine Orchard
BrokerAge General Insurance
Services
Browns Social House - Westgate
Bruce Lea
Bruce Little
Bruce Marcille
Bryan Tink
Bud Laverick
Bud Peterson
Caitlin Gifford
Caitlin McMurrer
Calfisch Quarter Horses &
Equine Center
Canada Safeway
Canadian Forest Products Ltd
Canadian Natural - Calgary
Branch
Canadian Natural -
Grande Prairie Branch
Canadian Tire Associate
Store #344
Candace Clark
Candace Tatttrie
Candice Edey
Candice Frpke Massage
Candice Mills
Candyne Services Inc.
CANFOR (Canadian
Forest Products Ltd.)
Canwest Insurance
Group

Capistrano Holdings Ltd.
Caralee Ilchuk
Caralee Parr
Carleen Floyd
Carly Clark
Carly Denis
Carol Culp
Carol Renfree
Carolyn Horneland
Caron Education Foundation
Carrie MacMullin
Carrie Sandboe
Casey Boyne
Cassjon CassJon
Castaspella Boutique
Catherine MacKenzie
Catherine McLroy
Caverly LeClerc
CDN Controls Ltd.
CDR Energy
Cecile Neil
Cecilia Marcillo
Cenovus Energy
Centre For Creative Arts
CFWE 105.7 FM & Leroy Wilson
Entertainment
Chad Rookes
Chandelle Batty
Chantelle Rycroft
Charitable Giving Foundation/
O'Shea Foundation
Chariz Blanco
Charlene Morrison
Charlene Pike
Charlene Squires
Charlene Watson
Charlette LaCount
Charlotte Penson
Chelsea Boxshall



\$905,835.00
for Enhanced
Medical
Equipment

2019 - 2020

Donors



Chelsea Sauder
Cheri Chomyc
Cheryl Kruger
Cheryl Murray
Chick Oilfield Contracting Ltd.
Chrenek & Dion Investment
Advisors
Chris Cann
Chris Omahony
Chrisandra Hachey
Christa Kiddine-Hergott
Christie Machuk
Christina Fournier
Christine Groner
Christine Jones
Christine Longtin
Christine Stalker
Christine Williams
Christine Yakel
CIBC
Cindy MacPherson
Cindy O'Flaherty
Cindy Park
Cindy Reber
City Furniture (G.P.) Ltd.
City of Grande Prairie
City of Grande Prairie
Clark Builders
Cliff Headon
Clint Neville
Cody Chick
Cole Murphy
Colette Smith
Colin Burns
Con Anderson
Connie Hartel
Connie McGovern
Control Tech
Control Tech
Cord Spero
Corey Avery
Corinne Shillington
Corrie Merchant
Corrine Shmyruk
Cory Pfannmuller
Costco Canada Liquor Ltd.
Costco Wholesale Canada Ltd.
County of Grande Prairie (ASB)
Agricultural Service Board
County of Grande Prairie No. 1
Courtney Volden
Crafty Things 4 Crafty Homes
Creative Staging Solutions
Cristy Ellen K. Photography
Crouse's Cleaners

Crystal Furlong
Crystal Gaede
Cujo's C-Cans Sales & Rentals
Cygnet Dental
DAHT Thing
Daina Stringer
Dairy Queen
Dalvin Napen
Dan Balisky
Dan Longtin
Dana Quartly
Daniel Trudeau
Danielle Daw
Danielle Neave
Danielle Unilowsky
Danny Noskey
Darcee Pyper
Darla Zuk
Darren Gouchie
Darren Hessler
Dave Duncan
Dave Pilger



David C. Bliss Professional
Corporation
David Couture
David Gushue
David Purnell
David Urness
Dawn Elliott
Dawn Miller
Dean Fritsma
Dean Radbourne
Deana Charbonneau
Debbie Robinson
Debra Chrenek
Debra Tunke
Denee Dautel
Denee Dautel
Denise Wilson
Dennis Farn

Dennis Haugli
Dennis Leggatt
Dennis McIntosh
Dennis Smith
Dennis Warren
Dental Care Centre
Desmond Brown
Devco Developments Corp
Devin Pilgrim
Devon Morgan
Diana Arends
Diana Gitzel
Diane Kushneryk
Diane Lowe
Dianna Robertson
Dianne Almond
Dianne Coffin
Dianne Coffin
Dianne Kriewaldt
Dilya Dilya
Discover 53 North Destination
Marketing Fund Ltd. (Minhas)
DJ Transport
Dolly McKerchar
Donald Whiteford
Donna Boyne
Donna Bradburn
Donna Conrad
Donna Kulba
Donna Senay
Donna Vandervoort
Dori Mark
Dorothy Jones
Doug Norton
Downtown Business Association
Dr. Arends
Dr. Cled Lewis
Dr. Harvey Wiens
Dr. Hugo Bertozzi
Dr. Keith Lemay
Dr. Len Brezac
Dr. Marie Moreau
Dr. Steve Roberts Professional
Corporation
Dragon Chef Restaurant
Duane Diepdael
Duayne Peterson
Duct Dynasty Heating & Cooling
Ltd.
Duncan McNabb
Dustin Richards
Dwayne G. Peters Professional
Corporation
Dwayne Head
Dwight Lazenby

Dylan Rautenstrauch
Dynamic Energy Group
Earls Kitchen & Bar
Ecosteam 2015 Ltd.
Ed Wrzosek
Eddie Fisher
Edward D. Dyrda
Edward's Factory Outlet
Elaine Lyle
Elite Rentals
Elite Vac & Steam
Elizabeth Good-Gerow
Elizabeth Kushner
Elizabeth Reynoso
Elizabeth Winnicky
Elke Backer
Ella Duncan
Ellen Helgason
Emily Gerein
Emily Goring
Empire Drywall Ltd.
EPFC Corp.
Erica Preiss
Erica Tunke
Erik Martin
Erin Skjersven
Ernest Lepine
Ernie's Sports Experts
Esther Begalke
Esther Christensen
Evan Lawrance
Evelyne Farnden
Evelyne Viens Dobish
Evergreen Park
Executive Driving Services Inc.
Expert Mobile Communications
Ltd
F.A.C.T Services
Fay Enid Freisz
FC59 Staff Association
Fiona Munroe
Fletcher Mudryk and Co.
Fore Seasons Indoor Golf Centre
Forgedwood Metal Works Inc.
Frank Pohr
Freedom Fitting Ltd.
Friesen Land & Leasing Company
Ltd.
Fubar Beverage Services
Fundamental Technologies Ltd.
Fundamental Technologies Ltd.
FYi Doctors
Gabe Scott
Gail Deagle
Gail Wright

Garry McGovern
 Gene Davenport
 George Simpson
 Georgia Lliou
 Gina Warren
 Golden West Broadcasting Ltd.
 Gordon Pearcy
 GP Public School District #2357
 GPRC Executive Suite
 Grande Prairie Associates Realty Ltd.
 Grande Prairie Auto Group
 Grande Prairie Chamber of Commerce
 Grande Prairie Coffee Co.
 Grande Prairie Feed Service Ltd
 Grande Prairie Golf and Country Club
 Grande Prairie Kubota Ltd.
 Grande Prairie Lions Club
 Grande Prairie Live Theatre
 Grande Prairie Public School District #2357
 Grande Prairie River Rats Association
 Grande Prairie Surgeon's Office
 Grande Prairie Tourism
 Grant Rix
 Great Northern Casino
 Greg Dobko
 Greg Rowe
 Greg Shillington
 Gregg Distributors Ltd.
 Grovedale Golf Course
 Gwenat Gwenat
 H Curle
 Hadeel Sami
 Hammerhead Resources
 Hayes Fry Law
 Heartbeat Productions
 Heather Fedorick
 Heather Hilhorst
 Heather Rayner
 Helen E. Taylor School
 Helen McQuaig
 Helix Engineering Ltd.
 Herc Equipment Rentals
 Highballer Energy Services
 Hi-Tech Business Systems Ltd.
 Holloway Lodging Limited Partnership
 Holly Ljuden
 Home Hardware
 Horizon North Logistics Inc.
 Hospital Development and Education Fund of Canada
 HPL Mechanical
 Husky Group of Companies
 Hutterian Brethren Church of Birch Meadows
 Ian Brown
 Ian Kreuzinger
 IComm
 Inked Energy Services Ltd.

Integrity Industries North Inc.
 International Paper
 Investors Group
 Ione Carlson
 Irene Henley
 Irene Love
 Irons Design
 Isabell Kameka
 Isabelle DeVries
 J Vans Oilfield Services
 J.S Roy Professional Corporation
 Jacalyn Morissette
 Jack Ouellette
 Jackie Wallan
 Jacqueline Hessler
 Jacqui Reber
 Jade Cash
 James D. McElgunn
 James Obniawka
 James Willsey
 Jamie Franey
 Jana Kerswell
 Jane Schotz
 Janelle Head
 Janelle MacRae
 Janelle Schmidt
 Janelle Swanberg
 Janet Gibbs
 Janet Green
 Janey McMahon-Rowland
 Janine Farrell
 Jarvis Dawson
 Jasmine Mutch
 Jason Kolosky
 Jason Kushneryk
 Jason Nesbitt
 Jason Steinkopf
 Jason Tait
 Jason Tocheniuk
 Jason Walter
 Jason Zacker
 Jatt Wood
 Jeff Henson
 Jeffery's Cafe Co.
 Jen Croater
 Jen Ouellette
 Jenn Young
 Jennifer Crocker
 Jennifer Joy
 Jennifer Kuzemchuk
 Jennifer Robertson
 Jennifer Schoenroth
 Jennifer Tansem
 Jennifer Watson
 Jennifer Wrzosek
 Jeremy St. Laurent
 Jessica Davidson
 Jessica Hilderbrandt
 Jill Napen
 Jim Hansen's Gateway Ford
 Lincoln Sales Inc.
 Jim Hayward
 Jim Smith
 Joan Banks

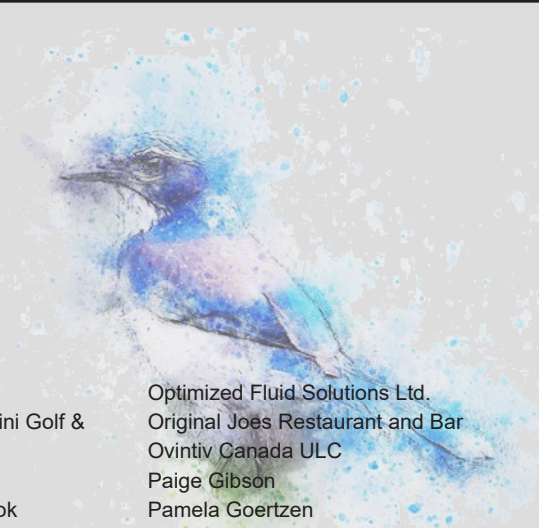
Joan C. Sullivan
 Joanne Bardak
 Joanne Buss
 Joby Desmet
 Jodi Zelko
 Jodie Skaley
 John Duke Consulting
 John Dyck
 John Kate John Kate
 John Kavangh
 John MacLennan
 John Neudorf
 John Rudyk
 John Witschen
 Jolanta Lmidzinski
 Jonathan Abbott Prof. Corp
 Joseph J. Renooy
 Josh Boyne
 Joshua Desgagne
 Josie Backe
 Judy Keddie
 Judy Nanooch
 Juergen Muehrier
 Julia Vincent
 Juliane Roy
 Julie Crittall
 Julie McGuinness
 Jump Yard
 Kaleb Lagace
 Kaley reiswig
 Kalia Hicks
 Kandice Wasylciw
 Kara Conway
 Kara Cornfield
 Kardelen Mosenko
 Karen Backmeyer
 Karen George
 Karen Johnson
 Karen Munjak, Chartered Accountant
 Kari Anderson
 Kari May
 Karly Cole
 Kassandra Storeshaw
 Kate Pieper
 Katelyn Dafeo
 Katherine Kousaie
 Katherine Macnab
 Kathryn Duncan
 Kathy Sutherland
 Katie Hawrylenko
 Katie McKeon
 Katie Thomasen
 Kay Noskey
 Kaye Bauman
 Kayla Carlson
 Kayla Hartz
 Kayla Rich
 KC A. Curtis
 Keddie's Tack and Western Wear
 Keith Jefferies
 Keith Lemay Professional Corporation
 Kelli Sharkey

Kelly Newbury
 Kelly Newbury
 Kelsey Hope
 Kelsey Phillips
 Ken Belke
 Ken Fredrickson
 Ken Sargent GMC Buick Ltd.
 Kendee Johnson
 Kennedy Tibbo
 Kent Hall
 Kev Air Refridgeration & Heating
 Kevin Robertson
 Kevin Vobeyda
 KFC Main
 KFC West End
 Khan Mohammad
 Kiara Mcleod
 Kim Crowe
 Kim Dreger
 Kim Drever
 Kim Greene
 Kim Lissoway
 Kim Reiswig
 Kim Staples
 Kimberly Galla
 Kirsten Johnstone
 Klean Rite
 Klean Rite
 KMSC Law LLP
 Kory Brazel
 Kory D Brazel Professional Corporation

**12,000
 Teddy Bears
 for Tiny Patients**

Kris Robins
 Krista Bollinger
 Krista Carver
 Kristen Davis
 Kristin Dirom
 Kristina Tinworth
 Kristine Sandboe
 Krysten Salsman
 K-Tec Industries Inc
 Kumon Math and Reading Centre
 Kyla Van Dresar
 Labatt Alberta Brewery
 Larry Brown
 Larry Pratt
 Laser Tag Central
 Latitude 55 Distilling Co.
 Laura and Donald Cooper

2019 - 2020 Donors



Laura Gray
 Laura Gray-Mitchell
 Laura Kenney
 Lauren Lojczyc
 Laurie L. Mettisila (Hale)
 Laurie Rode
 Lavern Sorgaard
 Leah Olson
 Leanne Nixon Vander Linden
 Lee Jones
 Lee's Sheet Metal (1980) Ltd.
 Legislative Assembly of Alberta
 Lena Young
 Les Thes Davids Tea/Davids Tea
 Lewis & Chrenek LLP
 Lianna Kosik
 Lidia Savoie
 Lifeline Canada
 Lillian Zurock
 Lincoln Demyen
 Linda Rathburn
 Linda Side
 Lindsay Lebrun
 Lindsey Klassen
 Liquid Edge Oilfield Services Ltd.
 Lisa Lagace
 Lisa Lovean
 Lisa Mitchell
 Lisa-Marie Nikoleychuk
 Little Smoky Gift & Co
 Liza Curtess Photography
 Lois Duke

Louis Albinati
 Lucas Johnson
 Lush Nails & Spa
 Lydia Melnichuk
 Lynn Robertson
 Lynne Muehrer
 Madden Properties Inc.
 Maj Jose
 Mandy Van Dresar
 Mandy Wild-Thibault
 Margaret Krzyczkowski
 Margaret Martel
 Margo Belzile
 Marianne Hartman
 Marie Froehlick
 Marisa Fournier
 Mark Michalyszen
 Mark Street
 Marney Hunter
 Marshall Tunke
 Mary Gourlay
 Mary Hansen
 Mary Jean MacKenzie
 Matt Bauer
 Matt Bauer
 Maureen Volden
 Maurita Tollestrup
 Maxim Storage Inc.
 Maxine Mulligan
 Mcgrath Salmon
 Meagan Palinkas
 Medallion Energy Services
 Megan Hoyseth
 Megan Speakeman
 Meghan Monkman
 Meghna DesRoches
 Melissa Boivin
 Melissa Burton
 Melissa Coombs
 Melissa Edmunds
 Melissa J. Erickson Professional Corporation
 Melissa Oatway
 Melissa Savich
 Mervin Alcack
 Michael G. Hughes
 Michel Thebeau
 Michele McKinnon
 Michelle Hoglelund
 Midwest on Main
 Mike Dalen
 Mike Levesque
 Mike Vavrek
 Milano for Men
 Milton H. Hommy

Minhas Family
 Mini Links: 18-Hole Mini Golf & Ice Cream Stand
 Miranda Gates
 Miss Amanda Erechook
 Miss Linda Foster
 Miss Maya Lutz
 Miss Michele McCormick
 Miss Victoria Kennedy
 Mitch Vandemark
 MNP LLP
 Modern Bombshell
 Modern Edge Book Keeping
 Modern Smiles Denture and Implant Centre
 Monarch Homes Inc.
 Morris Financial Group -A Division of DGM Financial Planning
 Mr. Mike's Steakhouse Casual
 MRI Developments Ltd.
 MD of Greenview #16
 Muriel Garrett
 Myrna Shuman
 Nancy Spooner
 Naomi Alexis
 Naomi Clark
 Natalie Hibbert
 Natasha Taylor
 Nathan Rudyk
 Naveed Raaj
 Neil Cooling
 Neil Holdings Ltd.
 Nevada Bob's Golf
 New Horizon Co-operative Ltd.
 Next Level VR Arcade & Mini Golf
 Nicole Chappell
 Nicole Duncan
 Nicole MacDonald
 Nicole Menzies
 Nikki Johnson
 Nikki Magnone
 Nina Stright
 Nitehawk Recreation Area
 Nitty Gritty Detaling
 Noir Hair
 Nordic Energy
 Norris Paquin
 Northern Mat & Bridge
 Northwest Alberta Retired Teachers Association
 Nuvista Energy Ltd.
 Oliver's Funeral Home and Crematorium
 Olivia Marshall
 OMG! Cupcakes

Optimized Fluid Solutions Ltd.
 Original Joes Restaurant and Bar
 Ovintiv Canada ULC
 Paige Gibson
 Pamela Goertzen
 Paramount Resources
 Patricia Elliott
 Patricia L. Olson
 Patricia M. Olson
 Patrick Bisson
 Patrick Wolff
 Patti Pederson
 Paula Van Buskirk
 PayPal Giving Fund Canada
 Peace Country Western Dance Club
 Peace Draft Horse & Pulling Club
 Pembina Pipeline Corporation
 Penny Stannard
 Phoebee Smithdorf
 Phoenix Energy Services Inc.
 Phyllis Irwin
 Phyllis Snider
 Phyllis Wood
 Pierre & Co Event Planning and Design
 Pipestone Ladies Golf League
 Pizza Hut
 Pizza Pad
 Pomeroy Inn & Suites Inc.
 Prairie Disposal
 Prairie Mall Administration
 Preet Hundal
 Prism Glass and Paint Ltd.
 Queen of Lashes
 Rachel Doepker
 Rachel Haines
 Rae Porter
 Rae-Ann Gemmill
 Raeanne Leach
 Raechelle Marcotte
 Raelene Dersch
 Ralph Morris
 Randy Haight
 Randy Housman
 Ranger Energy Services
 Ray Seabrooke
 Raymond Biggs
 RBC Financial Group (Royal Bank)
 RBC Foundation
 RBC Peace Country
 Rd Hillon
 Reach 96.3 FM
 Rebeca Elliot



Loretta A. Lieveise Professional Corporation
 Lori Deering
 Lori Glass
 Lori Grant
 Lori Pollock

Rebecca Greber
 Red Deer & District
 Community Foundation
 Reilly Transfer Ltd.
 RejuvaDERM
 Rene Blais
 Renita Tucker
 Rentco Equipment Ltd.
 Rentco's Tool Shed
 Revitalize Therapeutic
 Massage
 Revolution Auto Group
 Richard B. Bisson
 Professional Corporation
 Richard Beekman
 Professional Corporation
 Richard Gummer
 Richard Whitesell
 Ritchie Bros. Auctioneers
 Rob Haberman
 Rob Neil
 Robert Czubey
 Roberta Halladay
 Robyn Gifford
 Robyn Rogozinski
 Roc Dog Contracting Ltd.
 Roch Dallaire
 Rochelle Low
 Rock 97.7
 Rocky Mountain Chocolate
 Factory
 Rogue Compression Inc.
 Ron O'Flaherty
 Rosemary Van Herk Auger
 Rosenau Transport Ltd.
 Roska DBO
 Rotary Club of Grande Prairie
 Roy Balcom
 Royal Spirits
 Rural Discovery Destination
 Marketing Fund Ltd.
 Ruth Fredland
 Ruth Moore
 Ryan bowie
 Ryan Brown
 Ryan Townend
 Sailaja Bayapaneni
 Sandra Cook
 Sandra Impey
 Sandy Kunst
 Sarah Lynk
 Sargent Family Charitable
 Foundation
 Sasha Nogueira
 Savannah Ford
 Save-On Foods
 Scott Lissoway
 Scott Mason Chartered
 Accountant
 Scott Vyse
 SDM/PHX Life Foundation
 (Shopper's Drug Mart)



Sean Gillis
 Sean Sargent Toyota Ltd
 Secure Energy Services Inc.
 Seven Generations Energy Ltd.
 Sexsmith Lodge BPO Elks No.
 284
 Shanda Mazurek
 Shane Almstrong
 Shane Glowaski
 Shane Mudryk
 Shane Zeyha
 Shannon Backmeyer
 Shannon Stambaugh
 Sharon Kimble
 Sharon Peterson
 Shaun Fugleberg
 Shaun Waayenberg Professional
 Corporation
 Shawna Miller
 Shayleen Clausen
 Sheila Dillman
 Sheila Moerkoert
 Sheila Rphelps
 Shelly Haire
 Sheri Goff
 Sherry Campbell
 Sherrylee Willett
 Sheshu Parmar
 Shirley Ann Dancey
 Shirley Preuss
 Side Management
 Sierra Mobile Concrete (2012)
 Ltd.
 Snapshot Studio & Photo
 Sofia Li
 Sonya Plowman
 Sparks Brothers C-Store Inc.
 Sparks Brothers C-Store Inc.
 Splatter Paintball
 Sportswear Plus
 St. Gerard Catholic School
 Stacey Joosse
 Stacy Greening
 Standard AutoGlass Ltd.
 Standard AutoGlass Ltd.
 State & Main
 Status Energy
 Stephanie Flett

Stephanie Reeves
 Stephen Craig
 Steve Hannan
 Steve Lucuk
 Stollery Children's Hospital
 Foundation
 Storage Experts
 Strasdin Sangha Orthodontics
 Strphanie Russell
 Sundeep Minhas
 Superior Show Service Inc.
 Susan Reber
 Suzanne Chalifoux
 Suzanne Sharkey
 Swan City Rotary
 Syndicated Industries Inc.
 T.J. Johnson
 T.Sedore Photography
 Tammy Goring
 Tammy Greening
 Tammy Grega
 Tammy Henstridge
 Tanya Brewster
 Tanya Cox
 Tanya Edmunds
 Tara Energy Services
 Tawnya Tourangeau
 Teri Donald
 Terri McGrath
 Terryl Kosowan
 Tgrahn
 The CAT Rental Store
 The Estate of William Kees
 Rynsburger
 The Great-West Life Assurance
 Co
 The Internal Medicine Society
 C/O Dr. Yolande Westra
 The Keg Steakhouse and Bar
 The Sand Zone
 The Tong And Geraldine Louie
 Family Foundation
 Thiry Kelemen
 Thomas D Minogue Professional
 Corporation
 Tidewater Midstream
 Tiffany Manville
 Tim Blake
 Tim Hortons - (Bean Brewers Inc.)
 Tim Hortons Adver and Prom
 Fund (Can) Inc
 Timber Pro Logging Ltd.
 Tina Peyton
 Tina Sieben
 Tiny Hands of Hope
 TJ Perry
 Todd Bawol
 Todd P. Strang Professional
 Corporation
 Todd Russell
 Todd Tremblay
 Tony Roma's Famous For Ribs
 Toronto Dominion

Tracey Young
 Tracy Leishman Professional
 Corporation
 Tracy Leishman Professional
 Corporation
 T-Ram Canada Inc.
 Trapped entertainment Ltd.
 Travis Hipkins
 Travis Jensen
 Trent Mckeage
 Trenton Zeyha
 Trevor boychuk
 Trident Oilfield Services Ltd
 Trinity Body Art
 Triple Threat Diesel
 Troy Irvine
 Trudy Dombroskie
 Tylee Lavallee
 Tynessa Arkinstall
 United Way
 United Way Alberta Northwest
 United Way Centraide
 United Way of the Alberta Capital
 Region
 University of Alberta
 University Of Calgary
 Val Authenac
 Valard Construction Ltd.
 Valerie Hannak
 Valerie Lethbridge
 Valerie Peterson
 Velvet Energy Ltd.
 Veronica Harding
 Victoria Baker
 Vintage Wine & Spirits
 Vintage Wine & Spirits
 Wade Page Professional Corpo-
 ration
 Walter Paszkowski, MLA GP-
 Smoky
 Warren Samson
 Watch Me Grow
 Water Express
 Watson's Foto Source
 Wave Engineering Consultants
 Wave Engineering Consultants
 Wave Engineering Consultants
 Waydex Services GP Inc.
 Wayne Lock
 Wendy Pugh
 Wendy Simpson
 Wendy Taks
 Wendy Warner
 Westcan Feed & Grain
 Whellding Ltd
 Windsor Ford Sales
 Winmar
 WinWin 50 Staff Lottery
 YMCA of Northern Alberta -
 Grande Prairie
 Yubin Lin
 Yvonne Elliott



INDEPENDENT AUDITORS' REPORT

To the Board Members of the Grande Prairie Regional Hospital Foundation

Qualified Opinion

We have audited the financial statements of the Grande Prairie Regional Hospital Foundation, which comprise the statement of financial position as at March 31, 2020, and the statements of changes in fund balances, revenues and expenditures and cash flow for the year then ended, and notes to the financial statements, including a summary of significant accounting policies.

In our opinion, except for the possible effects of the matter described in the *Basis for Qualified Opinion* paragraph, the financial statements present fairly, in all material respects, the financial position of the Grande Prairie Regional Hospital Foundation as at March 31, 2020 and the results of its revenues and expenditures, its changes in fund balances and cash flow for the year then ended in accordance with Canadian accounting standards for not-for-profit organizations.

Basis for Qualified Opinion

In common with many charitable organizations, the Foundation derives revenue from various cash sales, fundraising activities, donations and contributed materials, the completeness of which is not susceptible to satisfactory audit verification. Accordingly, verification of these revenues was limited to the amounts recorded in the records of the Foundation. Therefore, we were not able to determine whether any adjustments might be necessary to contributions, excess of revenues over expenditures and cash flow from operations for the years ended March 31, 2020 and 2019, current assets as at March 31, 2020 and 2019 and net assets as at April 1 and March 31 for both the 2020 and 2019 years. Our audit opinion on the financial statements for the year ended March 31, 2020 was modified accordingly because of the possible effects of this limitation in scope.

The Foundation maintains a permanent collection made up of donated items which are recorded at their appraised values upon donation. The Foundation does not maintain a complete catalogue of the items which comprise the permanent collection with values. Therefore, we were not able to determine whether any adjustments might be necessary to the permanent collection as at March 31, 2020 and 2019, and net assets as at April 1 and March 31 for both the 2020 and 2019 years.

We conducted our audit in accordance with Canadian generally accepted auditing standards. Our responsibilities under those standards are further described in the *Auditors' Responsibilities for the Audit of the Financial Statements* section of our report. We are independent of the Foundation in accordance with the ethical requirements that are relevant to our audit of the financial statements in Canada, and we have fulfilled our other ethical responsibilities in accordance with those requirements. We believe that the audit evidence we have obtained is sufficient and appropriate to provide a basis for our qualified audit opinion.

Responsibilities of Management and Those Charged with Governance for the Financial Statements

Management is responsible for the preparation and fair presentation of the financial statements in accordance with Canadian accounting standards for not-for-profit organizations, and for such internal control as management determines is necessary to enable the preparation of financial statements that are free from material misstatement, whether due to fraud or error.

(continues)

Independent Auditors' Report to the Board Members of the Grande Prairie Regional Hospital Foundation
(continued)

In preparing the financial statements, management is responsible for assessing the Foundation's ability to continue as a going concern, disclosing, as applicable, matters relating to going concern and using the going concern basis of accounting unless management either intends to liquidate the Foundation or to cease operations, or has no realistic alternative but to do so.

Those charged with governance are responsible for overseeing the Foundation's financial reporting process.

Auditors' Responsibilities for the Audit of the Financial Statements

Our objectives are to obtain reasonable assurance about whether the financial statements as a whole are free from material misstatement, whether due to fraud or error, and to issue an auditors' report that includes our opinion. Reasonable assurance is a high level of assurance, but is not a guarantee that an audit conducted in accordance with Canadian generally accepted auditing standards will always detect a material misstatement when it exists. Misstatements can arise from fraud or error and are considered material if, individually or in the aggregate, they could reasonably be expected to influence the economic decisions of users taken on the basis of these financial statements. As part of an audit in accordance with Canadian generally accepted auditing standards, we exercise professional judgment and maintain professional skepticism throughout the audit. We also:

- Identify and assess the risks of material misstatement of the financial statements, whether due to fraud or error, design and perform audit procedures responsive to those risks, and obtain audit evidence that is sufficient and appropriate to provide a basis for our opinion. The risk of not detecting a material misstatement resulting from fraud is higher than for one resulting from error, as fraud may involve collusion, forgery, intentional omissions, misrepresentations, or the override of internal control.
- Obtain an understanding of internal control relevant to the audit in order to design audit procedures that are appropriate in the circumstances, but not for the purpose of expressing an opinion on the effectiveness of the Foundation's internal control.
- Evaluate the appropriateness of accounting policies used and the reasonableness of accounting estimates and related disclosures made by management.
- Conclude on the appropriateness of management's use of the going concern basis of accounting and, based on the audit evidence obtained, whether a material uncertainty exists related to events or conditions that may cast significant doubt on the Foundation's ability to continue as a going concern. If we conclude that a material uncertainty exists, we are required to draw attention in our auditors' report to the related disclosures in the financial statements or, if such disclosures are inadequate, to modify our opinion. Our conclusions are based on the audit evidence obtained up to the date of our auditors' report. However, future events or conditions may cause the Foundation to cease to continue as a going concern.
- Evaluate the overall presentation, structure and content of the financial statements, including the disclosures, and whether the financial statements represent the underlying transactions and events in a manner that achieves fair presentation.

We communicate with those charged with governance regarding, among other matters, the planned scope and timing of the audit and significant audit findings, including any significant deficiencies in internal control that we identify during our audit.

Fletcher Moody & LLP

Grande Prairie, Alberta
July 8, 2020

Chartered Professional Accountants

TS
CR



GRANDE PRAIRIE REGIONAL HOSPITAL FOUNDATION
Statement of Changes in Fund Balances
Year Ended March 31, 2020

	Operating Funds	Flow Through Funds	Internally Restricted Funds	Externally Restricted Funds	Endowment Fund	2020	2019
NET ASSETS - BEGINNING OF YEAR	\$ 6,353,535	\$ 599,627	\$ 2,522,582	\$ 197,742	\$ 8,874,376	\$ 18,547,862	\$ 15,671,087
Excess of revenues over expenditures	1,381,793	-	-	-	-	1,381,793	2,876,775
Designated donations to restricted funds	(1,984,998)	117,376	1,160,807	24,630	682,185	-	-
Investment income earned in restricted funds	(234,031)	-	-	2,798	231,233	-	-
Disbursements from restricted funds	748,606	(49,233)	(456,315)	(18,300)	(224,758)	-	-
NET ASSETS - END OF YEAR	\$ 6,264,905	\$ 667,770	\$ 3,227,074	\$ 206,870	\$ 9,563,036	\$ 19,929,655	\$ 18,547,862

TR
CR



Please see accompanying notes to financial statements

GRANDE PRAIRIE REGIONAL HOSPITAL FOUNDATION

Statement of Financial Position

March 31, 2020

	2020	2019
ASSETS		
CURRENT		
Cash (Note 4)	\$ 1,808,712	\$ 1,391,974
Accounts receivable	36,373	29,144
Prepaid supplies	-	900
	<u>1,845,085</u>	<u>1,422,018</u>
INVESTMENTS (Note 5)	16,462,619	15,540,362
ARTWORK	66,200	66,200
CASH SURRENDER VALUE OF LIFE INSURANCE	<u>1,681,485</u>	<u>1,601,661</u>
	<u>\$ 20,055,389</u>	<u>\$ 18,630,241</u>
LIABILITIES		
CURRENT		
Accounts payable and accrued liabilities	\$ 125,734	\$ 82,379
NET ASSETS		
FUND BALANCES		
Operating funds	6,264,905	6,353,535
Flow through funds	667,770	599,627
Internally restricted funds	3,227,074	2,522,582
Externally restricted funds	206,870	197,742
Endowment funds	<u>9,563,036</u>	<u>8,874,376</u>
	<u>19,929,655</u>	<u>18,547,862</u>
	<u>\$ 20,055,389</u>	<u>\$ 18,630,241</u>

ON BEHALF OF THE BOARD

 Board Member

 Board Member

Please see accompanying notes to financial statements





GRANDE PRAIRIE REGIONAL HOSPITAL FOUNDATION

Statement of Revenues and Expenditures

Year Ended March 31, 2020

	2020	2019
REVENUES		
Designated donations	\$ 1,986,264	\$ 2,555,901
Festival of Trees <i>(Schedule 1)</i>	1,110,288	1,121,536
Investment income	390,560	495,539
General donations	334,040	242,431
Increase in cash surrender value of life insurance	79,826	64,997
Subsidy from Alberta Health Services	25,000	25,000
Therapeutic Clown Program <i>(Schedule 2)</i>	24,050	19,100
Bank machine commissions	14,664	16,353
Insurance premiums	13,766	14,059
Lifeline income	6,365	7,160
Visual Arts subsidy	2,431	7,970
Realized gains (losses) on investments	(4,676)	24,637
Unrealized gains (losses) on investments	(429,789)	138,259
	<u>3,552,789</u>	<u>4,732,942</u>
EXPENDITURES <i>(Schedule 3)</i>	<u>1,561,814</u>	<u>1,410,800</u>
EXCESS OF REVENUES OVER EXPENDITURES BEFORE DISBURSEMENTS AND OTHER EXPENSES	<u>1,990,975</u>	<u>3,322,142</u>
Disbursements and other expenses		
Bursaries awarded	41,750	19,750
Equipment and other donations	567,432	425,617
	<u>609,182</u>	<u>445,367</u>
EXCESS OF REVENUES OVER EXPENDITURES	<u>\$ 1,381,793</u>	<u>\$ 2,876,775</u>

*J
en*



Please see accompanying notes to financial statements

GRANDE PRAIRIE REGIONAL HOSPITAL FOUNDATION

Statement of Cash Flow

Year Ended March 31, 2020

	2020	2019
OPERATING ACTIVITIES		
Excess of revenues over expenditures	\$ 1,381,793	\$ 2,876,775
Items not affecting cash:		
Realized losses (gains) on marketable securities	4,676	(24,637)
Unrealized losses (gains) on marketable securities	429,789	(138,259)
Cash surrender value of life insurance	(79,824)	(64,997)
	<u>1,736,434</u>	<u>2,648,882</u>
Changes in non-cash working capital:		
Accounts receivable	(7,229)	(12,176)
Prepaid supplies	900	200
Accounts payable and accrued liabilities	43,355	466
	<u>37,026</u>	<u>(11,510)</u>
Cash from operating activities	<u>1,773,460</u>	<u>2,637,372</u>
INVESTING ACTIVITY		
Investments	<u>(1,356,722)</u>	<u>(2,567,052)</u>
INCREASE IN CASH	416,738	70,320
CASH - BEGINNING OF YEAR	<u>1,391,974</u>	<u>1,321,654</u>
CASH - END OF YEAR (Note 4)	<u>\$ 1,808,712</u>	<u>\$ 1,391,974</u>

T
ca



Please see accompanying notes to financial statements



Grande Prairie Regional Hospital Foundation

10409 98 Street, Grande Prairie, AB T8V 2E8 | (780)538-7583
info@gphospitalfoundation.ca | GPHospitalFoundation.ca