



# YOUR FOUNDATION *Footprint*

making an impact on the future of your healthcare...

June 2022


## Within the last month...

Welcome to your **Grande Prairie Regional Hospital Foundation Footprint** - a monthly update on how you are making a huge impact on healthcare in this community.

Your generosity is vital to ensuring **we all** have access to new and enhanced equipment at Grande Prairie Regional Hospital and Queen Elizabeth II Ambulatory Care Centre. The effort you make to support your Hospital will leave a lasting effect on your community for years to come.

The month of May filled our hearts with

gratitude as we celebrated the closing of the Key to Care Capital Campaign. At a Donor Appreciation Event on May 28, your Foundation announced that it not only reached the \$20 million goal set back in 2015, but the goal was surpassed.

With your help, GPRHF was able to raise over \$21 million over the course of the Campaign to support programs and services and enable the purchase of equipment for GPRH (*Read more starting on page 2*). 

## Recap: *Thanking our Donors*

### Grande Prairie Regional Hospital Foundation Surpasses Capital Campaign Fundraising Goal

Your Hospital Foundation officially wrapped up its Key to Care Capital Campaign with a Donor Appreciation Event on May 28 at Grande Prairie Regional Hospital.

Key to Care Capital Campaign first launched in November 2015 with a \$20 million goal to help provide equipment, services, and other amenities for the new regional hospital.

Cindy Park was GPRHF's Executive Director when the Campaign first launched. "There's nothing more exciting than being handed a project like this that really invites the entire community to be a part of it, and share in the outcome that will benefit the entire region," she said. Park said, at the time of the launch, she was told that

*continued on next page...*




## YOU *have* DONATED:

220 balls of yarn 

 46 puzzles

 175 DVDs

Six backpacks with dignity items (for Mental Health Backpack Program) 

1,500 packages of modelling clay 

 40 stuffed animals

One brand new BBQ for patient BBQs 



\$1,050 in grocery store gift cards for patient BBQ days

**TO PATIENTS  
IN YOUR HOSPITAL!**

# You are...

## Reducing Discomfort and Stress...

Four portable 3D bladder scanners were purchased with funds to the Key to Care Capital Campaign. These scanners are used to detect urine retention in patients. It's a non-invasive ultrasound device that significantly decreases the risk of infection for patients using them in long-term care, acute care and for rehabilitation. The purchase of this new bladder scanner will help cut down the unnecessary risks associated with catheterization, and it will improve staff efficiency. Because of its small mobile size, staff can go to a patient's room to perform the procedure, rather than transporting the patient to diagnostic imaging. This saves on both staff and diagnoses time, as well as reducing stress for the patient... especially for our palliative and geriatric patients. ❤️



### Circle OF Care

GRANDE PRAIRIE REGIONAL HOSPITAL FOUNDATION

## Become an integral part of healthcare!

By joining the **Circle of Care**, you are making the decision to contribute a small monthly gift to the GPRH Foundation. This gift will support your choice of the following streams:

- **Community Health & Wellness**
- **Equipment, Technology, and Innovation**
- **Youth Health & Wellness**

When we all come together to give monthly gifts, it turns "good healthcare" into **GREAT healthcare**. The impact of small monthly gifts will change the lives of thousands of patients in your community.

Your Foundation wants to keep local patients local... and through your monthly generosity, this can happen.

*continued from previous page...*

a \$20 million was too ambitious, and wouldn't be possible to meet. However, Park knows how unique and how generous people in the region are, and she always knew that together anything was possible.

"If it wasn't for the care and dedication of this community," Park said in a speech to attendees, "We wouldn't be here today."

GPRHF Major Gifts Officer, Dawn Veilleux-Miller was the lead fundraiser on this project, starting her career at your Foundation right as the Campaign began. Veilleux-Miller said that she is grateful to have worked with our community over the years for this incredible cause. "I am beyond thrilled to have worked with so many donors over the last few years to reach and surpass our \$20 million goal," she said.

The final Campaign total was just over \$21 million. The funds raised have helped purchase many pieces of essential equipment for GPRH, including OBIX fetal monitors for the new Maternity Unit, an ENT navigation system to enable patients to stay close to home for sinus surgeries, and bladder scanners that enhance patient treatment and experience while reducing the risk of infections and complications, from traditional procedures.

Despite the unseasonably chilly day, we were thrilled to greet nearly two hundred donors and share a nice BBQ lunch. We're thankful for the help of ARC Energy who provided your Foundation with the grill and the volunteers to help us feel our crowd. ❤️



# Join now!

[gphospitalfoundation.ca/circle-of-care](http://gphospitalfoundation.ca/circle-of-care)

# You are...

## Providing the gift of exercise, fresh air and leisure to patients...



Contributions to the Key to Care Campaign were integral to the purchase of new and enhanced equipment for Grande Prairie Regional Hospital. Some of those funds facilitated the purchase of Duet® Tandem Wheelchair Carriages. The Duet® is a unique combination of a comfortable wheelchair and a sturdy specialty bike that offers a stable ride for passenger and rider. Some models allow the passenger some peddling ability, while the rider is always in steering and brake control. These bicycle-like ride-ons allow people with limited ability the benefit of outdoor exercise, and those with no mobility the joy of riding a bicycle.

The wheelchair and bike can be easily disconnected and separated allowing versatility for the passenger and rider and easier access to areas where the bike cannot go.



Inclusion is a big focus at your hospital. The Duet® carriages provide inclusion for people who will never be able to ride a bike on their own, or who can benefit from cycling but cannot fully or safely take on the task of full control.

They accommodate all sizes from 20 to 275 pounds and offer maximum maneuverability with minimum effort. The wheelchair's low centre of gravity provides excellent weight distribution and stability.

Low-intensity cycling is a fantastic low-impact exercise for people recovering from knee injuries and for those with limited mobility who may not get much exercise on a regular basis. It not only has physical benefits like lowering blood pressure, maintaining muscle and burning fat, but it has a lot of benefit on a patient's mental health as well, allowing them to get out and enjoy the fresh air.

This equipment promises to make a huge impact on patients at your hospital for years to come. Without the compassion and generosity of donors like you, providing this level of care, rehabilitation and inclusivity would not be possible. ❤️



**DAY #1 WINNER!**

Licence No. 599230



**DAY #2 WINNER!**

Licence No. 599439



**DAY #3 WINNER!**

Licence No. 599440

a whopping  
**\$7,930**  
Raised for your hospital

## Lucky Winners... Thank you for your support!

The Peace Country Energy Show was held on May 18 and 19 at Evergreen Park. Your Hospital Foundation was lucky enough to be there with a 50/50 Raffle booth, selling tickets in support of the Mental Health Unit at your hospital.

**Day 1 Winner** was Rob Banner with \$1,570

**Day 2 Winner** was Brett Anderson with \$930

**Day 3 Winner** was Alex Murray with \$5,430



## Leaving a Legacy Through Planned Giving

A planned gift is a heroic act of kindness that helps leave a lasting impact on the healthcare of your family, your neighbours, your friends, your coworkers and yourself.

The life you've built says a lot about you, your values and what you care about the most. Your gift will build a brighter future and leave a legacy that lives on through generations.

The Foundation's planned giving options provide income or potential savings now and in the future, without affecting your present lifestyle.

Whether you choose to give through a cash donation, life insurance policy, a bequest in your will, gifts of publicly traded stock options, bursaries, endowments, RRSPs, or even gifts of property or art, there is a way to give that can suit everyone's needs.

### Bequests

Gifts made through a will are called bequests. Your bequest can be a fixed amount, a specific percentage of the residual amount of the estate, and/or a specific asset. A bequest in your will to a charity of your choice will provide tax relief for your estate in the year of death.

### Gifts of Life Insurance

A gift of life insurance makes it possible for you to leverage your contributions to your charity of choice. Your gift to charity is assured with a paid-up policy or through a policy with ongoing premiums paid by the donor.

### Endowment Funds

The idea of creating a perpetual stream of financial support makes sense for people who see a similarity between retirement funds and endowment provisions. Only the income or a portion thereof will be used to support the Hospital Foundation.

To discuss your options to leave a legacy with the Foundation please contact:

**Keith Curtis - CFRE, Executive Director**

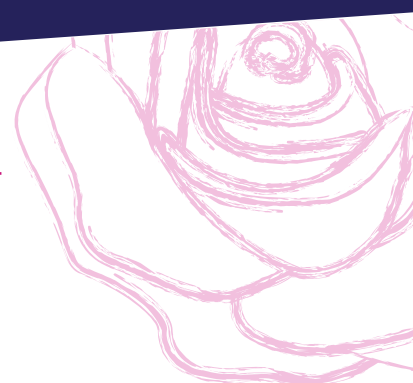
Phone: 825-412-4130

Email: Keith.Curtis2@albertahealthservices.ca

**NOTE:** Always seek the advice of an accredited estate planner, financial advisor or legal counsel when considering your legacy giving goals, and then contact us to determine how your gift can make a difference at the Grande Prairie Regional Hospital.

## Monthly Sponsors

*Showing our thanks...*



### The Therapeutic Clown Program

Imagine how scary and intimidating a hospital can be to a young person. There are children that stay in hospital and spend days, months and sometimes even longer, away from their home and family.

Our Therapeutic Clown helps minimize the stress for our young patients and their families during treatments, while having medical procedures, or to fill the time while family members wait for a loved one to have surgery. This can be a great comfort to these young patients and their families.

Thank you to the following people:

June 2022      Meyaard Holdings

### The White Rose Program

The White Rose Program makes it easier for families to say goodbye to their loved ones. The program provides families with a parking pass, blankets, snacks, coffee and comfort bags. Comfort bags include books for children and adults, toys, cards and other amenities. This allows families to spend precious time with their loved ones without added worries, stress or anxiety.

Thank you to the following people:

June 2022      Cecile Neil

**To sponsor a program call: 825-412-4130**

GRANDE PRAIRIE REGIONAL  
Hospital Foundation 

11205 110 Street, Grande Prairie, AB T8V 4B1  
[gphospitalfoundation.ca](http://gphospitalfoundation.ca)



@supportyourhospital



@GPRHFoundation



@GPRH\_Foundation



Grande Prairie Regional  
Hospital Foundation