

# YOUR FOUNDATION *Footprint*

making an impact on the future of your healthcare...

May 2022



## Within the last month...

Welcome to your new **Grande Prairie Regional Hospital Foundation Footprint** - a monthly update on how you are making an impact on your healthcare and your community with your generosity.

Your donations to your Hospital Foundation are vital to bringing new and enhanced equipment into Grande Prairie Regional Hospital and Queen Elizabeth II Ambulatory Care Centre. The effort you make to support your Hospital will leave a lasting effect on your community for years to come.

April started off with one of the best events of the year - 2day FM's Annual Father Daughter Ball, presented by Triple Threat Diesel. It was a beautiful night of happiness and bubbles as fathers spent the evening with their

favourite girls, dancing the night away.

The GPRHF team lauched Circle of Care - your newest, most convenient way to make a huge difference in healthcare for the region. Circle of Care allows you to make a small, manageable monthly gift to your Hospital Foundation, ensuring that essential equipment is available at GPRH. Together we can keep local patients local for treatment.

We have also been busy preparing for Costco's Pediatric Penguin Campaign, and the upcoming fundraising season. We are looking forward to trade shows and charity tournaments hosted by our amazing donors - making good healthcare great healthcare... and we couldn't be more honoured to be a part of it. Thank you!



## Recap: *a night under the sea*

### 2day FM's Father Daughter Ball raises over \$50K for your hospital

The long-awaited Father Daughter Ball was a night dads and daughters won't soon forget. The charity event put on by 2day FM, and presented by Triple Threat Diesel, was held on April 2 at the Pomeroy Hotel and Conference Centre. It was a scene set for an underwater princess' dream, complete with a bubble entrance and table filled with underwater-themed treats. Daughters spent a lovely evening with their father (or father-figures) dancing the night away, eating great food and having the time of their lives.

"It's been rewarding watching this event grow year after year, and since we postponed the event for two years through

*continued on next page...*



Photo: Mother by Nature Photography

## Easy ways you can make an *impact*

Support your  
**Pediatric Unit**  
by donating at  
**Costco GP**  
**Today!**



GRANDE PRAIRIE REGIONAL  
Hospital Foundation 

Donate at Costco GP until May 31  
to support your Pediatric Unit!

GRANDE PRAIRIE REGIONAL  
Hospital Foundation 

**LOCAL HOSPITAL  
FUNDRAISER • ONE DAY ONLY! •**

**ALL DAY EVENT: MAY 31<sup>ST</sup>**

ORDER ANY  
**LARGE PEPPERONI  
OR CHEESE PIZZAS**  
FOR ONLY **\$12**

**\$5 FROM EVERY ORDER WILL BE DONATED BACK TO THE HOSPITAL**

Offer code: HOS10  
**ORDER NOW**

Cals 180 - 220 per slice. Offer valid at participating locations, while supplies last.

Plan your *Pizza Party* for May 31  
and support your Hospital!



Photo: Mother by Nature Photography

continued from previous page...

COVID, it was extra special to see all those smiling faces, and feel the love and support from our community,” said 2day FM Grande Prairie GM Caralee Parr.

Proceeds from this event go directly to supporting your hospital. Parr said she is grateful for our generous community. “We are so thankful to our sponsors, attendees and volunteers to make this our most successful event yet!”

Your Hospital Foundation could not be happier to be a part of this event. We are honoured to have 2day FM as our valued partners and friends. Together we make sure your dreams of supporting your hospital become a reality.

“Being able to fundraise for equipment that will help families today and for many years to come, while putting on a fun night for dads and daughters to make some forever memories, makes this such a rewarding event,” said Parr “I’m so proud of the 2day FM team for taking on this initiative.”

The next Father Daughter Ball is scheduled for October 2023! Connect with us on social media to watch for updates.



# You are... Helping Others Breathe Easier

Your support of this hospital has provided essential pulmonary function equipment to the Respiratory Unit.

Your donor dollars have provided patients with a Novus Platinum Elite DX Body Plethysmograph; equipment specifically designed to define abnormalities in airflow related to a number of lung conditions and diseases.

This non-invasive testing will help physicians diagnose asthma in children and adults, as well as find breathing issues that are associated with COPD, bronchitis, scarred lung tissue, cancer and other diseases that cause thickened and enlarged airways. Undiagnosed, lung disease leads to decreased quality of life, and shortened life span for most patients.

Covid-19 has definitely increased the occurrence of breathing problems in people during infection, and following. Pulmonary function testing is helping physicians understand the cause and severity of lung problems associated with Covid patients and helping them treat these people throughout their Covid recovery.

Now, patients can get treatment more quickly, allowing them to feel better, breathe easier and regain the quality of life they had lost when struggling to breathe. This isn't only a positive impact on the patient, but also to the healthcare system as a whole. Early intervention, better education and health management reduces the number of Emergency Room visits.

Pulmonary Function testing equipment is not only essential to this community, but it is changing lives.

This wouldn't have happened without your support. ❤️



## Become an integral part of healthcare!

By joining the **Circle of Care**, you are making the decision to contribute a small monthly gift to the GPRH Foundation. This gift will support your choice of the following streams:

- **Community Health & Wellness**
- **Equipment, Technology, and Innovation**
- **Youth Health & Wellness**

When we all come together to give monthly gifts, it turns “good healthcare” into **GREAT healthcare**. The impact of small monthly gifts will change the lives of thousands of patients in your community.

Your Foundation wants to keep local patients local... and through your monthly generosity, this can happen.

# Join now!

[gphospitalfoundation.ca/circle-of-care](http://gphospitalfoundation.ca/circle-of-care)





You are...

Providing Mothers with Comfort, Rest and Recovery...

## Tempur-Pedic mattress pads turn birthing beds into proper, comfortable sleep surfaces for postpartum mothers

Thanks to your generosity, mothers at your new hospital are getting the quality sleep they need after having a baby.

Your dollars have provided mothers with Tempur-Pedic comfort pads designed to transform birthing bed mattress into a more comfortable sleeping surface. Sleep is an important part of postpartum recovery. Maternity Unit manager Penny Kelln said that these pads help provide mom with this essential rest.

"Labour beds are not the most comfortable to sleep on. These mattress toppers make the beds much more comfortable and help give these moms the rest they need after birth," Kelln said.

Moving into the Grande Prairie Regional Hospital presented an opportunity for a new, more advanced maternity unit in your community. One of the biggest changes within the unit is that expecting parents now remain in the same room for the entirety of their stay. That's to say that healthy mothers without complications now labour, deliver and recover in the same bed.

To accommodate this new model of patient-stay, your Maternity Unit is equipped with bed specifically designed for labouring

and delivering babies – The Hill-Rom Affinity 4 Birthing Bed. They break down in the middle to become birthing beds, complete with stirrups, making the process easier for mothers, and providing easier access for nurses and doctors. Postdelivery, they're whisked back together into a full-length bed. However, these beds are a firm surface and not conducive to a good night's sleep.

Moms are stiff and sore following the birthing process, and a firm bed surface can exacerbate postpartum discomfort. The comfort pads you helped provide give moms a longer, better-quality sleep which helps support breastfeeding and recovery.

Perhaps to some, these seem like an insignificant addition to equipment in a hospital of this size, but can you imagine working the hardest day of your life and not having a comfortable bed to recuperate in? These have a massive impact in your community. By improving the comfort, rest, and experience of most mothers in the region, Tempur-Pedic comfort pads play an essential role giving our new babies the very best start in life, too. ♡

## Young Philanthropists

Your community is raising a generation of philanthropists. We *love* to see our youth participating in the future of their healthcare, and putting their community first! Recently these kids have stopped by your Foundation to fill our hearts by spreading *joy and kindness* to people during the most difficult times of their lives. We are so *proud* of them.



Harper made and sold bracelets to buy Beanie Boos for your Therapeutic Clown Program.



Jesse dropped off this inspiring banner created by kids attending Champion Gym reminding kids at your hospital that they are strong and brave.



Jaxon and Caylen stopped by with these baskets that their grandmother made - Easter treats for kids staying at GPRH.



## Leaving a Legacy Through Planned Giving

A planned gift is a heroic act of kindness that helps leave a lasting impact on the healthcare of your family, your neighbours, your friends, your coworkers and yourself.

The life you've built says a lot about you, your values and what you care about the most. Your gift will build a brighter future and leave a legacy that lives on through generations.

The Foundation's planned giving options provide income or potential savings now and in the future, without affecting your present lifestyle.

Whether you choose to give through a cash donation, life insurance policy, a bequest in your will, gifts of publicly traded stock options, bursaries, endowments, RRSPs, or even gifts of property or art, there is a way to give that can suit everyone's needs.

### Bequests

Gifts made through a will are called bequests. Your bequest can be a fixed amount, a specific percentage of the residual amount of the estate, and/or a specific asset. A bequest in your will to a charity of your choice will provide tax relief for your estate in the year of death.

### Gifts of Life Insurance

A gift of life insurance makes it possible for you to leverage your contributions to your charity of choice. Your gift to charity is assured with a paid-up policy or through a policy with ongoing premiums paid by the donor.

### Endowment Funds

The idea of creating a perpetual stream of financial support makes sense for people who see a similarity between retirement funds and endowment provisions. Only the income or a portion thereof will be used to support the Hospital Foundation.

To discuss your options to leave a legacy with the Foundation please contact:

**Keith Curtis - CFRE, Executive Director**

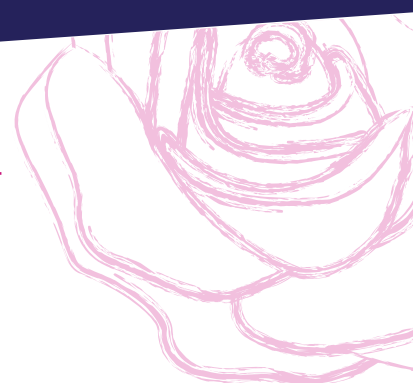
Phone: 825-412-4130

Email: Keith.Curtis2@albertahealthservices.ca

***NOTE:** Always seek the advice of an accredited estate planner, financial advisor or legal counsel when considering your legacy giving goals, and then contact us to determine how your gift can make a difference at the Grande Prairie Regional Hospital.*

## Monthly Sponsors

*Showing our thanks...*



### The Therapeutic Clown Program

Imagine how scary and intimidating a hospital can be to a young person. There are children that stay in hospital and spend days, months and sometimes even longer, away from their home and family.

Our Therapeutic Clown helps minimize the stress for our young patients and their families during treatments, while having medical procedures, or to fill the time while family members wait for a loved one to have surgery. This can be a great comfort to these young patients and their families.

Thank you to the following people:

May 2022      Glen & Debbie Tunke

### The White Rose Program

The White Rose Program makes it easier for families to say goodbye to their loved ones. The program provides families with a parking pass, blankets, snacks, coffee and comfort bags. Comfort bags include books for children and adults, toys, cards and other amenities. This allows families to spend precious time with their loved ones without added worries, stress or anxiety.

Thank you to the following people:

May 2022      Rhonda Side & Jeremy Walker

**To sponsor a program call: 825-412-4130**

GRANDE PRAIRIE REGIONAL  
Hospital Foundation 

11205 110 Street, Grande Prairie, AB T8V 4B1  
[gphospitalfoundation.ca](http://gphospitalfoundation.ca)



@supportyourhospital



@GPRHFoundation



@GPRH\_Foundation



Grande Prairie Regional  
Hospital Foundation